

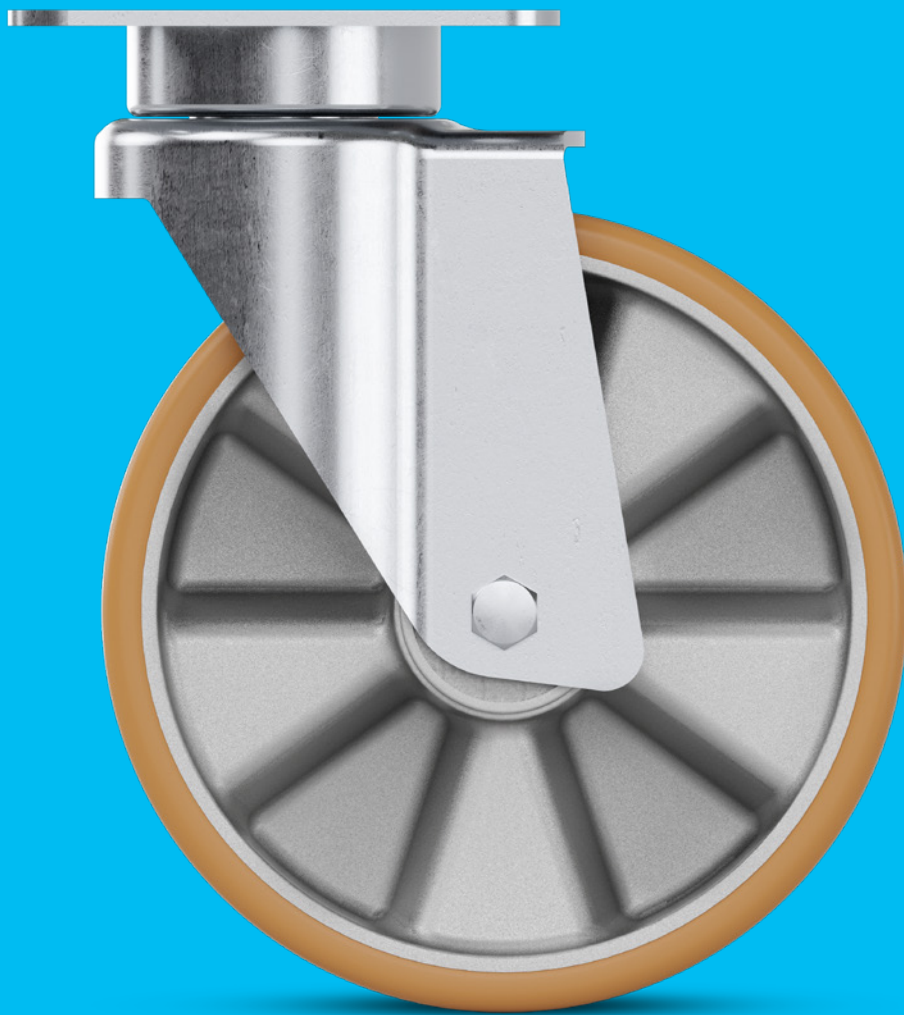
# PRODUCT INFORMATION

## DELTA

 300 - 750 kg

 178 - 265 mm

 125 - 200 mm

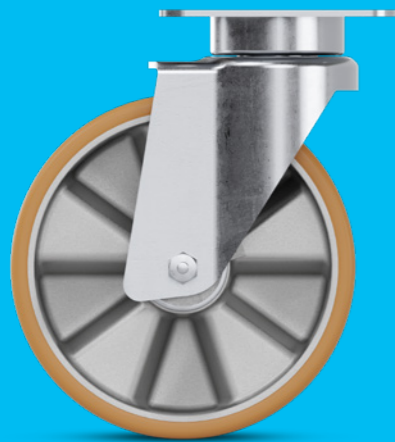


**TENTE**

BETTER MOBILITY. BETTER LIFE.

## HOUSINGS

PAGES: 4-9



## WHEELS

PAGES: 10-15



## FITTINGS

PAGES: 16-19



## BETTER MOBILITY IN PREMIUM QUALITY

TENTE believes in smart mobility solutions which noticeably improve people's lives and their work environment. TENTE solutions increase productivity, ensure safety and open up new horizons in matters of design and durability as well as environmental friendliness. Leading manufacturers and companies of different industries rely on these competencies as well as our high production quality.

On the following pages you will find technical information about our Delta product family. We will also demonstrate the added value this mobility solution offers to your organisation. Features include:

### Easy steering

Swivel head with precision ball bearing.

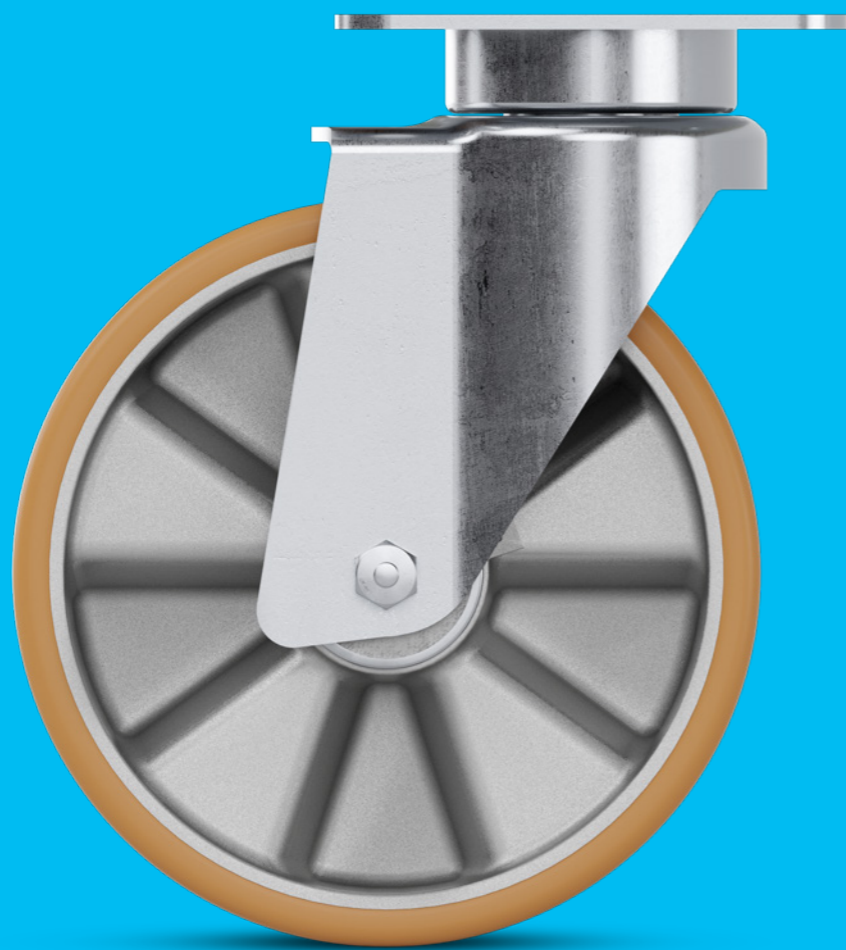
### Flexible lock function

Use of two independent actuation systems in one castor.

### Strong construction

Housing made of heavy steel for high load capacity.

# HOUSINGS

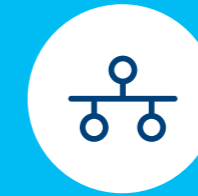


## FEATURES



### Optimised steering mechanism

Directional lock for improved steering around bends, as well as moving in a straight line over long distances.



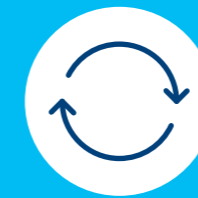
### Practical system solution

Practical system solution with all technical components for central locking.



### User-friendly central lock

Simultaneous locking of more than one castor using a central actuation lever.



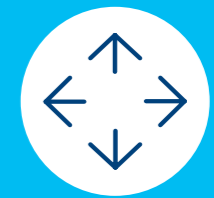
### Easy steering

Precision ball bearing in swivel head for excellent rotation properties under high loads.



### Flexible lock function

Use of two independent actuation systems in one castor.



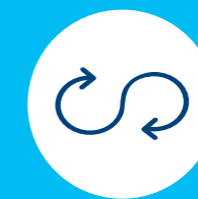
### Optimised directional lock

Directional lock can be adjusted to 2 x 180° or 4 x 90°, depending on your requirements.



### Secured stand

Total lock for simultaneously locking the wheel and swivel housing.



### Uninterrupted use

Sealed swivel bearing for continuous, uninterrupted movement.




### Strong construction

Housing made of heavy steel for high load capacity.


# HOUSINGS

The housing is made of heavy pressed steel for high load capacity and is bright zinc plated and blue passivated. The covered swivel head has a sealed precision ball bearing and is maintenance-free. The materials are tested in our own laboratory to ensure they comply with European standards. Non-hazardous materials are used in order to comply with RoHS and REACH regulations. We have two types of housing, single wheel castors and twin wheel castors.


## Single wheel castors for loads up to 600 kg




**Swivel castor**  
Wheel and housing are free to move for easy manoeuvrability.




**Directional lock**  
Directional lock for improved steering around bends, as well as movement in a straight line for long distances.



**Total lock**  
Total lock for simultaneously locking the wheel and swivel housing for a secure stand.

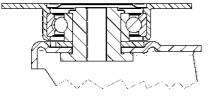


**Central wheel brake**  
Simultaneous locking of more than one castor using a central actuation lever. The wheel brake prevents unintended movement.



**Fixed castor**  
The wheel is free and the housing fixed so it cannot swivel but only move forwards and backwards and allows a stable movement.

**Swivel bearings**



Precision ball bearing for best manoeuvrability.



**Combination total and directional lock**  
Construction of the brake allows to use 1 x 360° directional lock on the same housing. Can be retrofitted.



**Optimised directional lock**  
Can be adjusted to 2 x 180° or 4 x 90°, depending on your requirements. Long brake pedal on request.



**Practical system solution**  
Technical components such as the profile bar and brake pedal are available for central locking. See page 19.



**Increased occupational safety**  
Partially elastic foot protection to reduce accidents. Can also be used on uneven floors. It is available for all wheel diameters. Can be retrofitted. See page 19.

## Technical data and availability



Description	Housing type	Swivel castor	Swivel castor with directional lock	Swivel castor with total lock	Swivel castor with central wheel brake	Fixed castor
	Article description	3640	3641	3642	3645	3648
	Material	Heavy pressed steel	Heavy pressed steel	Heavy pressed steel	Heavy pressed steel	Heavy pressed steel
	Swivel bearing	Precision ball bearing, sealed and covered swivel head	Precision ball bearing, sealed and covered swivel head	Precision ball bearing, sealed and covered swivel head	Precision ball bearing, sealed and covered swivel head	-
Swivel interference	Wheel Ø 125 mm	235 mm	235 mm	235 mm	-	●
	Wheel Ø 160 mm	270 mm	270 mm	270 mm	270 mm	●
	Wheel Ø 200 mm	310 mm	310 mm	310 mm	310 mm	●

Items with this sign "●" are available. Items with this sign "-" are not available in our standard range. Please contact us.

## Twin wheel castors for loads up to 750 kg



**Swivel castor**  
Wheels and housing are free to move for easy manoeuvrability.



**Total lock**  
Total lock to simultaneously lock the wheels and swivel housing, leading to a secure stand.



**Fixed castor**  
The wheels are free and the housing fixed so it cannot swivel but only move forwards and backwards. This allows a stable movement.



**Robust housing with optimised manoeuvrability**  
Twin wheel castor with high manoeuvrability due to differential effect. Perfect for high load capacity and low height.



**Protect floors with load distribution**  
Two wheels distribute the load and minimise floor pressure.



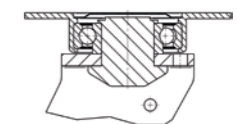
**Ergonomic total lock system**  
This brake system contains two pedals: one to lock the castor and a second one for easy release.

## Technical data and availability



Description	Housing type	Swivel castor	Swivel castor with total lock	Fixed castor
	Article description	9940	9942	9948
	Material	Heavy pressed steel	Heavy pressed steel	Heavy pressed steel
	Swivel bearing	Precision ball bearing, sealed and covered swivel head	Precision ball bearing, sealed and covered swivel head	-
Swivel interference	Wheel Ø 125 mm	235 mm	320 mm	●
	Wheel Ø 160 mm	270 mm	320 mm	●
	Wheel Ø 200 mm	310 mm	325 mm	●

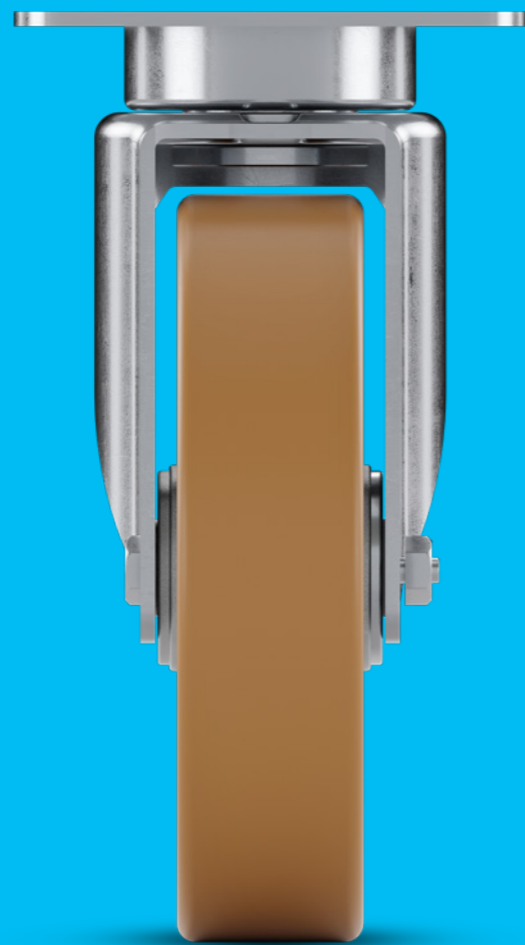
### Swivel bearings



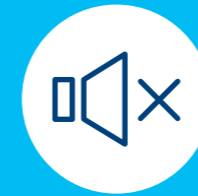
Precision ball bearing for best manoeuvrability.

Items with this sign "●" are available. Items with this sign "-" are not available in our standard range. Please contact us.

# WHEELS



## FEATURES



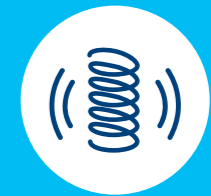
### Quiet rolling

Soft wheel versions for a quiet working environment. The hardness of the tread is variable to suit different materials and purposes.



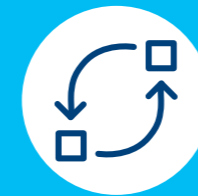
### Ergonomically friendly use

Wheels with optimised roll resistance to lighten the load for the user.



### Low-vibration transport

Extra soft wheels with good shock-absorbing properties.



### Resource-conserving part replacement

Threaded axles allow effortless wheel change.



### Increased occupational safety

Partially elastic foot protection to reduce accidents. Can also be used on uneven floors.



### High pressure stability

Rigid for enhanced running comfort.



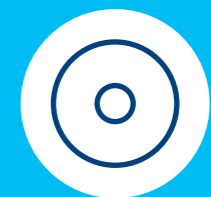
### Non-staining operation

Non-staining on contact with floors when left standing for long periods. Can also be used for floors made of untreated wood and natural stone.



### Non-marking movement

Wheels have reduced abrasion and little cleaning requirement.



### Low wear and tear wheels

Durable wheels with extremely low wear and tear.

# WHEELS

The characteristics of a wheel depend on the material and the bearing. The wheels are available in different levels of hardness. We can guarantee maximum manoeuvrability and quiet running, with a variety of treads.



**Elastech plus**  
Quiet-running elastic and silicone rubber for smoothest handling properties.



**Elastech plus**  
Vulcanised elastic rubber for high performance.



**Duratech**  
Stable and indestructible, made of polyamide and thermosetting plastic.



**Duratech load**  
Extra stable and indestructible, made of extra strong polyamide and thermosetting plastic.



**Maxtech**  
Perfect for functional design, injection-moulded polyurethane.



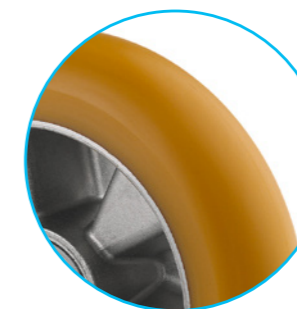
**Maxtech conductive**  
Solid injection-moulded polyurethane wheel for long-lasting use in different shore hardnesses. Sealed stainless steel bearing.



**Novatech**  
Highly resilient classics with cast polyurethane coating. Also available with convex tread.



**Ultratech**  
Outstanding performance through premium polyurethane. Also available with convex tread.



**Highly customisable wheels**  
Our casted polyurethane wheels are highly flexible to adapt them to your needs. The shore hardness of the tread and the shape can be customised. Use convex treads for added manoeuvrability or flat ones for better traction.

## Technical data and availability



Description	Product name	Elastech plus	Elastech plus	Duratech	Duratech	Duratech load	Maxtech	Maxtech conductive	Novatech	Ultratech
	Article description	IEP, IFP, ILP, IYP	SEP, SFP	UOO	UOP	TOO, TOP	UAP	QSC	ITP	ICP
	Tread material	Vulcanised elastic rubber in grey (non-marking) or black	Vulcanised elastic rubber in grey (non-marking) or black	Polyamide	Polyamide	Polyamide, heavy duty	Polyurethane, injected	Polyurethane, injected	Polyurethane, casted	Premium polyurethane, casted
	Tread hardness	Shore A 67	Shore A 67 ±3	Shore D 75	Shore D 75	Shore D 75	Shore A 92	Shore A 85	Shore A 92 or A 80	Shore A 75 or A92
	Wheel body material	Aluminium	Welded steel	Polyamide	Polyamide	Polyamide	Polyamide	Polyurethane, injected	Aluminium	Aluminium
	Temperature range	-20 °C / +85 °C	-20 °C / +80 °C	-40 °C / +80 °C	-40 °C / +80 °C	-40 °C / +80 °C	-40 °C / +80 °C	-40 °C / +80 °C	-20 °C / +60 °C	-20 °C / +60 °C
	Width of tread / Wheel diameter in mm	50 mm / Ø 125 - 200	50 mm / Ø 160 - 200	43 mm / Ø 125 40 mm / Ø 160 50 mm / Ø 200	46 mm / Ø 125 50 mm / Ø 200	50 mm / Ø 125 - 160	40 mm / Ø 160 50 mm / Ø 200	40 mm / Ø 200 40 mm / Ø 160	50 mm / Ø 125 - 200	50 mm / Ø 125 - 200
	Antistatic	Optional	-	-	-	-	-	-	Optional	-
	Electric conductive (10 <sup>4</sup> OHM)	Optional	-	-	-	-	-	●	-	-
	ESD-capable	Optional (ILP, IYP)	-	-	Optional	-	Optional	Optional	Optional	-
	Washable	-	-	-	-	-	-	●	-	-
Bearing type	Plain bearing	-	-	●	-	●	-	-	-	-
	Roller bearing	-	-	-	-	-	-	-	-	-
	Cone ball bearing	-	-	-	-	-	-	-	-	-
	Precision ball bearing	●	●	-	●	●	●	● Sealed, stainless steel	●	●
Load capacity	Wheel Ø 125 mm Single wheel	300 kg	-	-	-	600 kg	300 kg	-	500 kg	500 kg
	Wheel Ø 125 mm Twin wheel	600 kg	-	750 kg	750 kg	-	-	-	750 kg	750 kg
	Wheel Ø 160 mm Single wheel	350 kg	540 kg	500 kg	-	600 kg	350 kg	300 kg*	600 kg	600 kg
	Wheel Ø 160 mm Twin wheel	700 kg	-	750 kg	-	-	-	-	750 kg	750 kg
	Wheel Ø 200 mm Single wheel	450 kg	600 kg	600 kg	600 kg	-	500 kg	350 kg*	600 kg	600 kg
	Wheel Ø 200 mm Twin wheel	750 kg	-	750 kg	750 kg	-	-	-	750 kg	750 kg

### Bearing types



Plain bearing for short distances.



Precision ball bearing for highest performance.



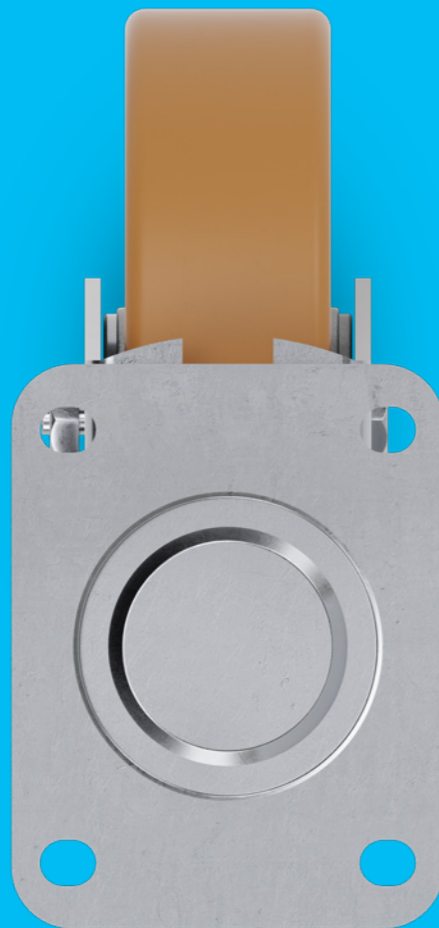
### Load capacity

The load capacity depends on the housing and wheel. It has been tested and fulfills the requirements according to EN 12532 at a speed of 4 km/h and EN 12533 at a speed of 6 km/h. When using four castors, you can calculate the necessary load capacity as follows: The sum of the weight of your application plus the additional load divided by three castors.

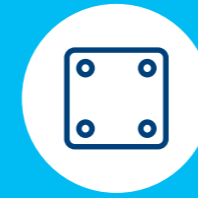
$$\frac{\text{Weight of application} + \text{load}}{3} = \text{Load capacity of one castor}$$



# FITTINGS



## FEATURES



### Standard fittings

Plate fittings are made according to industrial standards.



### Customised fitting sizes

Plate fitting size on request.

## ADDITIONAL FEATURES



### Tested quality

Tested in our own laboratory for compliance with European standards.



### Customised castors

High possibility to develop customised solutions.



### Colour matching

Colours can be adapted to match the product design.



### Non-hazardous materials

Complies with the RoHS directive and REACH regulation of the European Union. Does not contain polycyclic aromatic hydrocarbons or chromium (VI).



### Comfortable handling

These wheels allow you to easily pass obstacles.

# PLATE FITTINGS

Secure connection with four screws. For a long-lasting and maintenance-free use, the plate fittings of the Delta product family are equipped with a lifetime greased and sealed precision ball bearing.



**Highest load capacity and low height**  
Combination of three swivel castors for an easy manoeuvrability of heavy loads, even in tight spaces. Various wheel models and sizes are available upon request.

## Technical data and availability

Description	<b>Fitting type</b>	Swivel plate	Swivel plate with central wheel brake	Fixed plate	Fixed plate
	<b>Available for housing type</b>	Single wheel and twin wheel	Single wheel	Single wheel	Twin wheel
	<b>Article description</b>	P63	P67	P63	P63
	<b>Size of plate</b>	137 x 105 mm	142 x 110 mm	137 x 115 mm	137 x 137 mm
	<b>Plate hole centres</b>	105 x 80/75 mm	105 x 77,5 mm	105 x 80/75 mm	105 x 80/75 mm
	<b>Plate hole <math>\varnothing</math></b>	11 mm	13 mm	11 mm	11 mm
Overall height	<b>Wheel <math>\varnothing</math> 125 mm</b>	178 mm	-	178 mm	178 mm
	<b>Wheel <math>\varnothing</math> 160 mm</b>	210 mm	225 mm	210 mm	210 mm
	<b>Wheel <math>\varnothing</math> 200 mm</b>	250 mm	265 mm	250 mm	250 mm

# ACCESSORIES

For all single wheel castors we offer suitable accessories like the elastic foot protection and the technical components for central locking.



## Foot protection

Description	<b>Article description</b>	Foot protection
	<b>Compatible with</b>	Single castors
	<b>Temperature</b>	-20 °C / +60 °C
	<b>Width</b>	151 mm
	<b>Ground clearance</b>	19 mm
	<b>Hardness of rubber flap</b>	Shore A 75
Weight	<b>Wheel <math>\varnothing</math> 125 mm</b>	0,54 kg
	<b>Wheel <math>\varnothing</math> 160 mm</b>	0,67 kg
	<b>Wheel <math>\varnothing</math> 200 mm</b>	0,75 kg
Length	<b>Wheel <math>\varnothing</math> 125 mm</b>	185 mm
	<b>Wheel <math>\varnothing</math> 160 mm</b>	220 mm
	<b>Wheel <math>\varnothing</math> 200 mm</b>	260 mm

## Profile bar for central locking



Description	<b>Article description</b>	Profile bar
	<b>Compatible with</b>	Single wheel castors with central wheel brake
	<b>Material</b>	Steel
	<b>Lengths</b>	Up to 3 m
	<b>Profile bar</b>	11 mm hex
	<b>Adjustment range of the brake pad</b>	10 mm

## Foot pedal for central locking



Description	<b>Article description</b>	Foot pedal
	<b>Compatible with</b>	Profile bar
	<b>Material</b>	Steel
	<b>Measurements</b>	70 x 94 mm



Example of a mounted foot protection

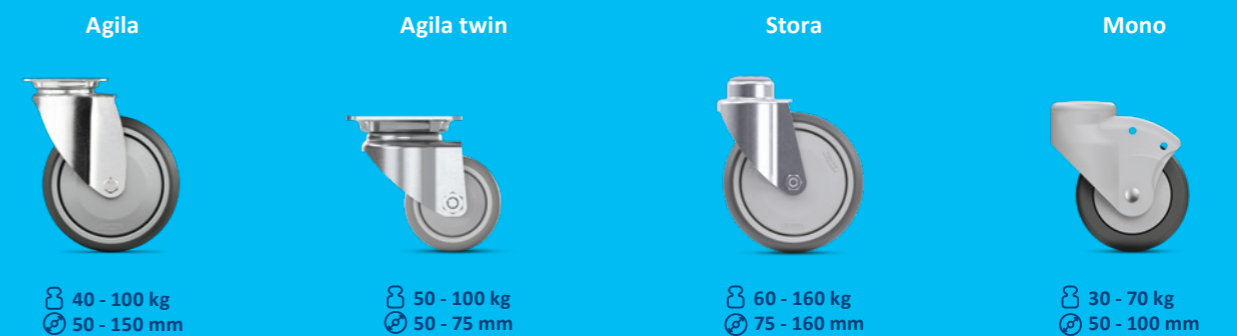
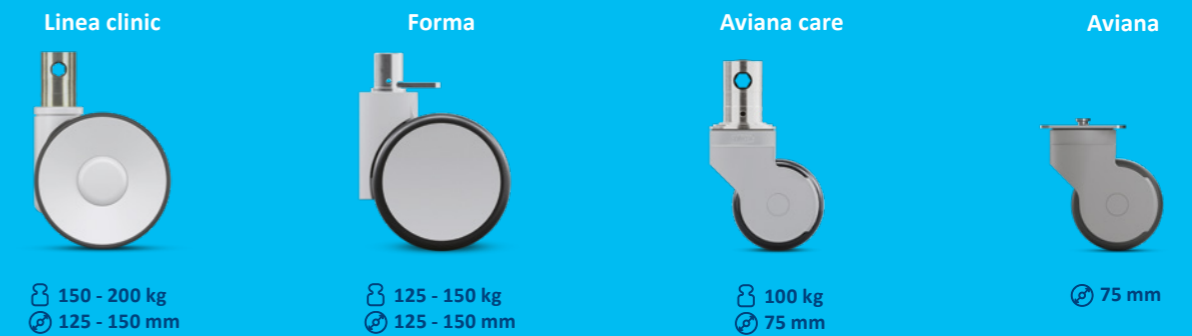


Example of mounted central locking components

# DIVERSITY WITH A SYSTEM OUR CASTORS

All of our products have their own specific qualities and strengths. Whether it's high design standards, specialist applications or exceptional load capacities – our range can meet your needs and can be adapted to fit different models.

From the correct dimensions and technical specifications to the required configuration, our product families are able to offer the ideal solution – whatever you need. Contact us for more information or visit our website: [www.tente.com](http://www.tente.com)



# EXPERTISE THAT INSPIRES

## CONTACT US

We are a globally operating company supporting you on five continents. This means on-site support with service on a level playing field – along with in-depth knowledge. Additionally, our solution experts will advise you on the best mobility concept for your needs. Go here to find your nearest TENTE location: [www.tente.com/locations](http://www.tente.com/locations)

## INCREASE YOUR EFFICIENCY

Our intelligent mobility solutions help you save time, effort, energy, and operating expenses. This allows you to improve your operating methods and working conditions, thereby optimising your processes and ensuring higher productivity, profitability and safety. Ask for our solutions catalogue or read about how our customers benefit from our tailor-made solutions on our website: [www.tente.com/solutions](http://www.tente.com/solutions)

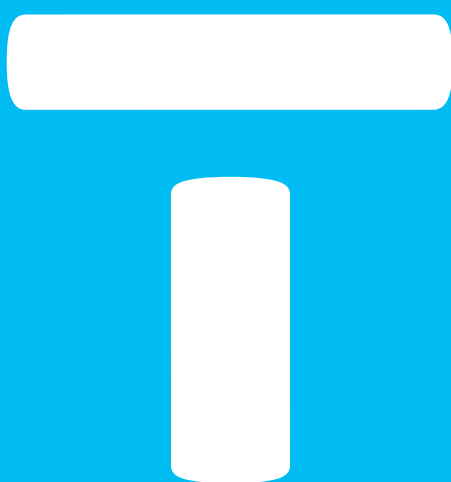
## SAVE DEVELOPMENT TIME

On our website you will find technical drawings, product data sheets and 2D and 3D CAD files in various formats: [www.tente.com/delta](http://www.tente.com/delta)

## GET MORE INFORMATION

In addition to our informative website, you can easily download various catalogues and brochures on mobility solutions, customer references, and much more: [www.tente.com/download](http://www.tente.com/download)





[www.tente.com](http://www.tente.com)



PRODUCTIVITY



SAFETY



DESIGN



DURABILITY



ENVIRONMENT