

SOLUTIONS FOR MEDICAL DEVICES EFFICIENT, SAFE AND CUSTOMISED



TENTE

BETTER MOBILITY. BETTER LIFE.



CONTENT

OUR SOLUTIONS

Ready for global challenges	3
Better health and productivity due to physical ergonomics	4
A healthy choice in all directions	6
Cognitive ergonomics for more safety and improved work processes	8
A clear plus in efficiency and ease of operation	9
Fast operation and maximum safety	10
Low-noise, lightweight and flexible	11
Designed entirely to suit your requirements ...	12
Groundbreaking safety from a standing stance	13
Solutions for safe transport and MRI areas	14
Durable design for the surrounding conditions in the medical environment	15
Services, far beyond boundaries	16
The right solution for every application	17

OUR RANGE OF CASTORS

Great design and driving comfort with Levina	18
Mastering everyday life comfortably with Levina care	19
Robust and ergonomic with Linea	20
Light and efficient with Linea light	21
Increased safety with Linea clinic	22
Safe stand with Linea load	23
Effortless operation with Linea e-lock	24
Efficient transport with E-Drive	25

OUR SERVICES FOR YOU

Full services with TENTE	26
Diversity with a system: our castors	28
Expertise that inspires	30

READY FOR GLOBAL CHALLENGES

Regardless of whether your new product developments require maximum safety, ergonomics, efficiency and usability or your target market requires a cost-efficient product realisation – talk to us. As a globally active company, we understand the global challenges in the medical field and will support you with trend-setting know-how, many years of experience and comprehensive service – right from the very beginning, from the first development phase of your project.

TENTE equips you to meet the challenges of the global medical market. For challenges that are becoming greater worldwide due to demographic change, rising life expectancies and the shortage of skilled workers. After all, we are at your side with precisely fitting products and with castors and wheels that help to ensure comprehensive healthcare.

READY FOR THE LATEST STANDARDS

We support you to upgrade your products to meet even the most demanding requirements. One example is the requirement according to the European Medical Devices Regulation. This regulation focuses on increasing the usability and intuitive safety of medical devices. Our solution: products that take physical and cognitive ergonomics to a new level, so that you fully comply with the standards that have been mandatory since May 2021.

READY FOR YOUR REQUIREMENTS

We view every challenge from a particular angle: from your perspective. Thus, the dialogue and close cooperation with you is extremely important to us. We take a holistic approach in all phases of development – and consistently respond to your specific requirements. In this way, you can trust in the seamless integration of our cutting-edge mobility solutions into your systems, processes and design language. Moreover, they comply uncompromisingly with the functional requirements of your applications.

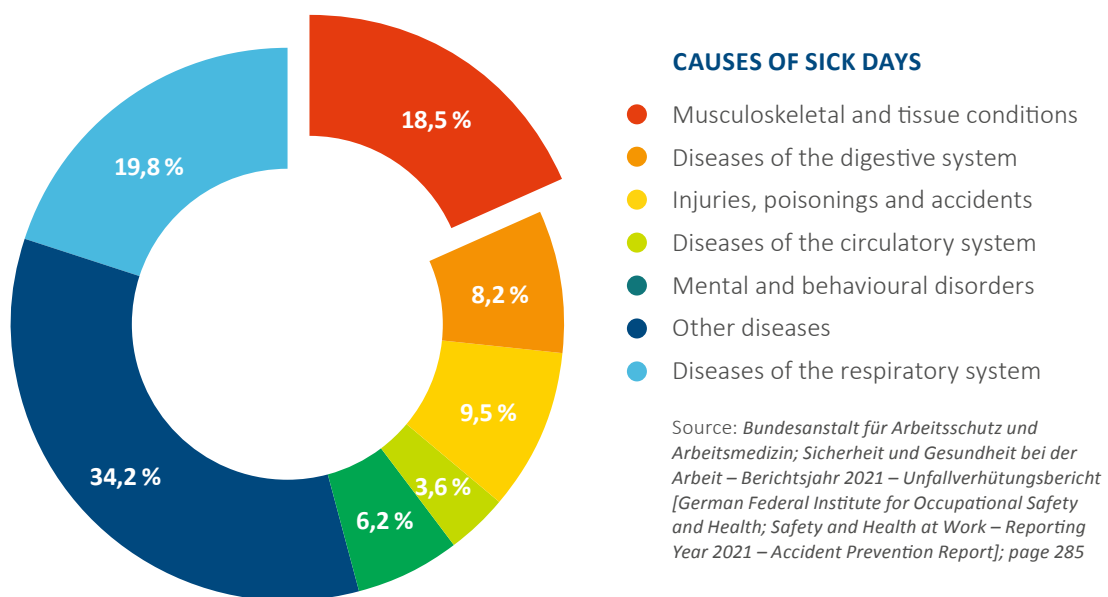
The following pages will show you our wide range of mobility solutions for medical devices. You can rest assured: whether you need castors and wheels for simple infusion stands or system solutions for your individual requirements – we know the challenges and we are ready.

BETTER HEALTH AND PRODUCTIVITY DUE TO PHYSICAL ERGONOMICS

Roughly a quarter of all sick days taken by nursing staff is caused by musculoskeletal disorders. After all, in the medical sector in particular, heavy devices, stretchers and patients often have to be moved. Therefore, physical ergonomics is a key factor for manufacturers of medical devices.

To be more precise: the interaction between anatomy or physiology and physical activities in everyday work. By focusing on smooth mobility, ergonomic design and motorised units, nursing staff can be relieved, preventive health care is supported and productivity in the medical work environment is measurably increased.

That is exactly why TENTE offers you a wide range of intelligent mobility solutions that focus on improving physical ergonomics – and thus set new standards.





'We are committed to reducing the workload of medical professionals. In this way, TENTE offers mobility solutions that relieve staff and contribute to a significant reduction in sick leave.'

Daniel Brandt, Medical Expert

A HEALTHY CHOICE IN ALL DIRECTIONS

THE SINGLE-WHEEL CASTOR

We recommend our Levina, Integral, Galea, Agila and Mono single-wheel castors for medical devices with less weight and for applications requiring primarily straight travel. This is because single-wheel castors offer almost the same level of straight travel as twin-wheel castors. Thus, they fulfil ergonomic requirements and allow you to achieve cost advantages.

Single-wheel castor Levina:



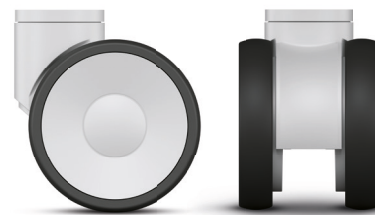
↓
You will find the product brochure here:



THE TWIN-WHEEL CASTOR

When it comes to increasing physical ergonomics of medical devices, twin-wheel castors stand out with a decisive advantage: a significantly reduced physical effort compared to single-wheel castors. This is due to the low swivel resistance resulting from the differential effect of the two wheels. This enables the nursing staff to manoeuvre and move heavy devices with ease. The higher the weight of the device under which the twin-wheel castors are mounted, the more this advantage is realised.

Twin-wheel castor Linea:



↓
You will find the product brochure here:



HOW IMPORTANT IS THE SWIVEL RESISTANCE FOR YOUR MOBILITY?

In hospitals, care facilities and clinics in particular, medical devices must be moved from A to B repeatedly. To reduce the workload of staff, mobility solutions must offer a starting and swivel resistance that is as low as possible.

The starting resistance describes the force required to set the medical device in motion from a standstill. The swivel resistance, on the other hand, is the force that must be applied to keep the medical device in motion and to manoeuvre it. The swivel resistance depends on various factors. Starting with the tread and the hardness of the tread up to the offset. However, the following principle applies: hard castors are used on soft floors and soft castors are used on hard floors.

Additional factors that have an impact on the swivel resistance are the type of swivel bearing, the ball race diameter and the weight of the medical device that the castors must carry.

To achieve optimal manoeuvrability in hospitals and care facilities, it is also important to consider the amount, type and arrangement of the castors. Fixed castors, for example, ensure very good directional stability even in long hallways. Moreover, if the medical device is equipped with swivel castors and fixed castors, it can also be rotated effortlessly and manoeuvred in all directions. It also offers caregivers improved directional stability when driving around curves.



THE ALL-ROUNDER: OUR LINEA PRODUCT FAMILY

Our Linea product family brings variety into motion – literally. The twin-wheel castor is available in a wide range of designs and is thus available for almost all requirements in the medical environment. Whether the aim is to lighten staff effort, simplify manoeuvring or increase safety – the Linea product family provides you with a suitable solution. The result: increased physical ergonomics, physical relief for caregivers, more productivity and improved health in terms of musculoskeletal disorders.

MORE RELIEF WITH OUR MOTORISED CASTOR E-DRIVE

In addition to selecting the right castors, there is another intelligent solution to noticeably increase physical ergonomics: our TENTE E-Drive motorised system. The mobility solution provides comfortable starting support, perfect directional guidance and tracking accuracy. Caregivers are able to move and manoeuvre even devices with a weight of several hundred kilograms effortlessly. In combination with the electric locking system e-lock, this ergonomic effect is even further enhanced. Your added value: more relief, more efficiency and more time savings.

COGNITIVE ERGONOMICS FOR MORE SAFETY AND IMPROVED WORK PROCESSES

PERFECT INTERACTION

In the medical environment, it is essential to have excellent teamwork – and this also applies to the interaction between people and applications: devices that are quick, easy and comfortable to handle improve the quality of care, increase safety and promote patient recovery. Intuitive operation also relieves the burden on skilled staff and ensures efficient workflows. Therefore, one aspect of the production of medical devices is indispensable: the consideration of processes in the interaction with medical devices – cognitive ergonomics. Cognitive ergonomics is also a key factor in TENTE's product development.

When it comes to cognitive ergonomics, the position of the control units is particularly important. The right position guarantees easy access and operation. Central locking castors are actuated remotely with just one kick pedal or by hand control, thus achieving reduced risk and saving time as well.

TENTE mobility solutions with safety function combine cognitive ergonomics with highest safety. When the handle is operated by hand or foot or with the help of an electric button, the wheels are released and can be moved as long as the control element is actively used. As soon as the user releases it, the wheels are automatically locked. This way, the system prevents unintentional movement and incorrect operation. At the same time, it is self-explanatory and easy to use.

PERFECT INTEGRATION

Mobility solutions that can be controlled digitally, such as our Linea e-lock, are just as much about intuitive and uncomplicated handling. They can be integrated into the individual work process in a highly flexible way. Their control function is freely programmable and can be integrated into existing control panels. Another advantage is the possibility to work without a gear lever rod. As a result, the mobility solution does not only offer unlimited design possibilities, but also saves you time during construction, assembly and any later maintenance.



Linea e-lock



You will find the product brochure here:



'Thanks to the innovative solutions from TENTE, we were able to significantly improve user-friendliness.'
Anne Becker, Global Marketing Manager at Siemens Healthineers

Read more about the customer reference
www.tente.com/siemens

A CLEAR PLUS IN EFFICIENCY AND EASE OF OPERATION

The demands on medical staff are constantly increasing. An ageing society, a rising need for health care services and the shortage of skilled workers also result in additional requirements for mobility solutions.

COMFORTABLE OPERATION AND EASY MANOEUVRABILITY ARE ESSENTIAL

Castors and wheels must help to increase efficiency in daily work and improve productivity. We are at your side to meet this challenge and offer you the right products.

FAST ASSEMBLY AND EASY CLEANING

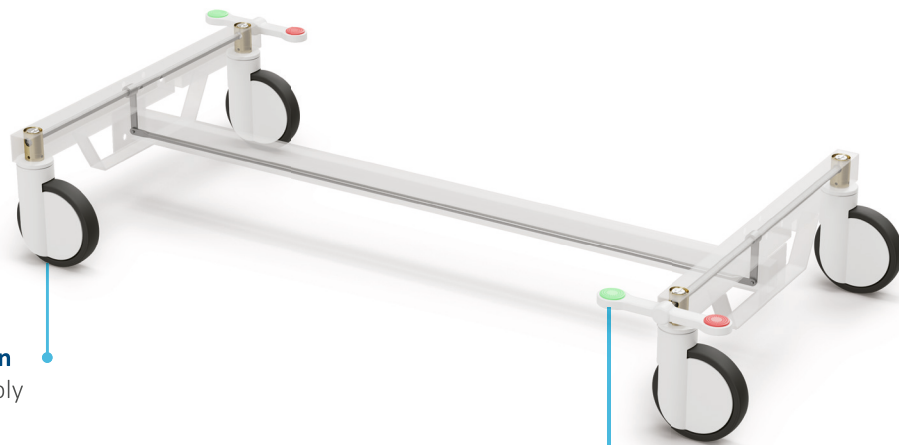
Our mobility solutions are easy to clean and, depending on the version, even washable. Versions with plug-in fittings are quick and easy to assemble, and thus provide time and cost savings. In addition, our castors and wheels are available with optional tread protection. The clear advantage: if you, as the manufacturer, move the medical device in-house during assembly, there is no need for manual covering or final cleaning of the castors.



Do you have any questions?
If so, simply use our contact form and get in touch with us:
www.tente.com/contact

FAST OPERATION AND MAXIMUM SAFETY

TENTE's central locking systems enable caregivers to lock and unlock all castors with just one step. The operating element of the kick pedal is accessible from every side and ensures ergonomic operation. The result: improved safety and significant time savings. With our many years of experience, we know how to achieve the perfect interaction between castors and locking system. For example, our R36-34 fitting ensures easy mounting of the castors.



Time-saving installation

The quick-fitting assembly system facilitates quick installation and replacement of the castors. This increases the efficiency of the work process and productivity while reducing the need for maintenance.

Highest operating comfort

The ergonomic kick pedal can be operated from both sides with just one push, so that locking and unlocking of the castors is quick and effortless in any position.

CENTRAL LOCKING SUITABLE FOR THE FOLLOWING PRODUCT FAMILIES:



Integral

📏 100 - 150 kg
⌀ 125 - 200 mm



Integral twin

📏 125 - 250 kg
⌀ 100 - 150 mm



Linea

📏 150 - 200 kg
⌀ 125 - 150 mm

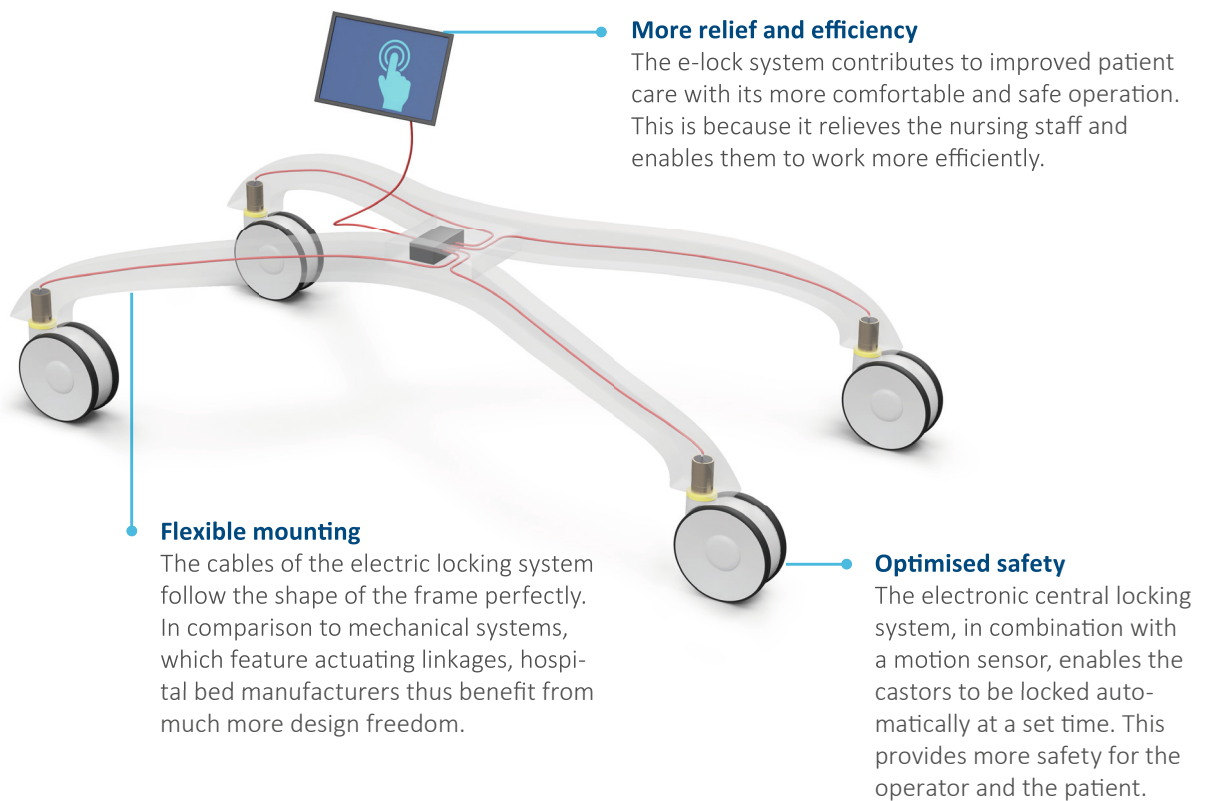


Levina care

📏 100 kg
⌀ 100 - 125 mm

LOW-NOISE, LIGHTWEIGHT AND FLEXIBLE

The locking system e-lock offers a locking function that can be activated electrically. The clear advantage: shifting torques and shifting forces are eliminated. Therefore, the actuation is almost silent and all actuation positions can be flexibly controlled. The system also offers a high degree of flexibility in terms of individual design and can be seamlessly integrated into the corporate design of the hospital bed manufacturer. The automatic locking function also reduces the risk of improper use – and thus increases safety.



CENTRAL LOCKING SUITABLE FOR THE FOLLOWING PRODUCT FAMILIES:



Linea e-lock

150 kg
150 mm



Do you have any questions?

If so, simply use our contact form and get in touch with us:

www.tente.com/en-gb/news/unlock-the-power-of-safety

DESIGNED ENTIRELY TO SUIT YOUR REQUIREMENTS

Our mobility solutions fit seamlessly into your design language. At the same time, they meet your functional and formal requirements.

This way, they can be individualised in many ways – from matching your corporate colours to adding branding with your logo and company name. Thus, we can supply entire product ranges – and support you in enhancing the awareness and identification value of your brand.

At the same time, our product families offer fitting features for every need and application. For example, our Linea and Levina product families are available in different sizes and can be supplied with various interfaces, functions, device connections and load capacities.

CUSTOMISED CO-DEVELOPMENTS

We would be happy to develop individual mobility solutions in collaboration with you. These solutions are designed entirely according to your requirements.

EASY ORIENTATION AND IMPROVED WORKFLOWS

The printable wheel caps of our Linea product family are ideal for providing orientation by means of colour coding. In this way, medical devices can be individually divided into sections, assigned to specific functions. They can also be labelled to match the corresponding hospital area. The result: improved work processes and more safety. This is because the colour-coded system prevents serious confusion and contributes to avoiding risks.

CUSTOMISED CASTOR DESIGN:



Surface coatings

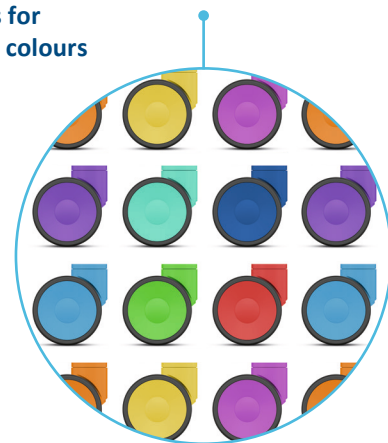


Individual branding



Fascinating picture prints

Examples for matching colours





GROUNDBREAKING SAFETY FROM A STANDING STANCE

Our certified mobility solutions meet the highest safety standards. Due to their cutting-edge features, they help to prevent accidents, improve occupational safety and protect medical devices.

SAFE STAND

In addition for safe movement, some applications also require a safe stand and extreme torsional strength. We have special solutions for them as the first choice for operating tables, transporters, microscopes and surgical robots.

ELECTRIC CONDUCTIVITY

Almost all our products for medical technology are available in an electrically conductive version. Tested conductivity ensures discharge capability, prevents electrostatic charging and protects the medical device, the user and the patient. We offer you solutions that discharge fault currents into the ground and do not produce any electrostatic charge due to friction while moving. These castors meet the strict

standards of IEC 60601 and EN 12527 and are fully tested for their electrical conductivity in our own testing laboratories.

INTEGRATED CABLE GUARD

Our castors and wheels are also available with cable catchers. This provides valuable protection for patients and staff. After all, if cables are run over, the wiring can be damaged. This defect can in turn lead to an electric shock. Cable catchers prevent cables lying around from being run over, avoid damage to the wiring and thus counteract the danger of electric shocks.





SOLUTIONS FOR SAFE TRANSPORT AND MRI AREAS

SAFE TRANSPORT

Our solutions enable low-vibration transport and perfect manoeuvrability even in confined spaces.

Heavy and sensitive medical devices often have to overcome obstacles and uneven surfaces. For this challenge, we offer mobility solutions with the right wheel diameter. They meet the ISO-60601 standard and improve both driving comfort and safety.

INTELLIGENT SOLUTIONS FOR THE MRI AREA

MRI areas are subject to specific safety standards. We support you with products that precisely meet these standards and ensure safe movement of your medical devices. Our Levina and Linea stainless steel castors are suitable for MRI-safe devices. These synthetic castors feature stainless steel parts that contain only a small amount of remaining magnetism. These are suitable for use in cases where the 5 Gauss line is not exceeded.

Linea safety with automatic locking function, on the other hand, prevents unintentional movement of medical devices for the MRI area. Moreover, the intelligent solution consists of our electronic locking system Linea e-lock scan and the electric drive E-Drive scan. This makes it easier for the nursing staff to attach the stretchers to the diagnostic devices. Moreover, it guarantees a safe stand and improves the prevention of falls.

DURABLE DESIGN FOR THE SURROUNDING CONDITIONS IN THE MEDICAL ENVIRONMENT

In hospitals, care facilities and medical practices, devices are exposed to a wide variety of environmental influences and must therefore feature specific properties: durability, washability, corrosion and temperature resistance, chemical resistance, high load capacity. In addition, the castors should also be shock absorbing. As one of the leading manufacturers of mobility solutions within the medical sector, we guarantee these essential properties and always add other crucial factors: many years of experience, lab-tested quality and expert support on five continents. No matter your circumstances, TENTE is the right choice for you.

WASHABLE AND CORROSION RESISTANT

Due to hygiene standards in the clinical environment, medical devices must be washable. Our castors and wheels meet the strictest requirements, are easy to clean and impress with their corrosion resistance. We consider your applications not only holistically but also individually in order to make the optimal mobility solution available to you – and support you when it comes to finding the right materials. For example, we can assist you with zinc-plated products or solutions made of stainless steel. We test the corrosion resistance of the materials using the salt spray test according to ISO 9227.

CHEMICAL RESISTANCE

Medical devices often come into contact with different cleaning agents and disinfectants. We will be happy to advise you on choosing the right materials with the required chemical resistances.

SHOCK RESISTANCE AND HIGH LOAD CAPACITY

Many devices used in the medical sector are heavy or must carry heavy loads. In addition, their technology is often highly sensitive and therefore requires reliable protection, especially when the devices are moved. For heavy loads, we offer durable constructions with outstanding load capacity. Our shock resistant mobility solutions also offer exceptional resistance to vibrations, outstanding dampening properties, shock absorption and noise reduction.



'Our two family-owned companies have been working together closely for almost 50 years now. That speaks for itself.'

Georgios Kampisiulis Kemmler, Managing Director,
and Anja Kemmler, Shareholder of the Stieglmeyer Group

Read more about the customer reference:
www.tente.com/stieglmeyer

SERVICES, FAR BEYOND BOUNDARIES

KEEPING A GLANCE ON THE GLOBAL ENVIRONMENTAL IMPACTS

Manufacturers who sell their products worldwide face the challenge of considering the different climatic conditions of their markets. This ranges from humidity to ambient temperatures. We are a globally active company on five continents and therefore know and understand the country-specific circumstances. In close consultation with you, we will find the exact solution for your individual local requirements.

SOLUTIONS FOR THE TRANSPORT OF YOUR DEVICES

Transportation also plays a significant role in the value chain for manufacturers of medical devices. The sensitive products have to be shipped and loaded in a protected manner without damaging the surrounding. In many hospitals, forklifts and pallet trucks are not allowed to be used in order to avoid damage to the floor.

In addition, expensive medical devices are often shared among several facilities and thus also re-packed and transported in regular

intervals. As an experienced manufacturer of industrial and heavy-duty castors, we offer you targeted mobility solutions for your factory traffic and transportation of goods. Safely from A to B – from the beginning to the end.

LAB-TESTED QUALITY

There is one company that we place very special demands on: TENTE. In order to be able to guarantee you consistent high quality for your product series at all times, TENTE has modern test laboratories. Here, our developments are tested to the limit.

In addition, we gladly carry out customer-specific tests for you and support you. For example, we can help you to achieve TÜV and FDA approval for your devices or to fulfil the approval requirement according to EN 60601.

'When it comes to our quality testing, we are quite particular to meet the highest standards. So we not only comply with the various national and international standards – but of course also with the specifications of our customers.'

Friedrich Hüchelbach, Global Quality Manager



THE RIGHT SOLUTION FOR EVERY APPLICATION

We take on every challenge – and consider your individual perspective. Whether it is to improve safety, increase productivity or ensure maximum durability. No matter if you require greatest possible comfort, improved ergonomics or minimum noise development – we will assure you of the right mobility solution. This is why we invite you to challenge us and get more information!

The following pages will provide you with a comprehensive overview of the key features and benefits of our products. If you are looking for an individual mobility solution tailored to your specific application, we will of course be there for you. On pages 26 and 27 you can find out how we design, develop and implement such a solution – together with you.



**Do you have
any questions?**

If so, simply use
our contact form
and get in touch
with us:

[www.tente.com/
contact](http://www.tente.com/contact)

GREAT DESIGN AND DRIVING COMFORT WITH LEVINA

📏 60 - 100 kg 🔄 103 - 194 mm ⚙️ 75 - 150 mm

Our Levina product family is ideal for the medical environment. You can rely on tested conductivity that protects both nursing staff and medical devices from electrostatic discharge. Spring-loaded solid plug fittings ensure shock-free transportation of sensitive medical devices. Particularly soft wheel variants ensure low noise development and thus help to keep patients comfortable. In addition, you can also get metal-free versions that are ideal for use in magnetic resonance imaging (MRI).



Low-vibration and low-noise transport

Synthetic housing (shock-absorbing) and soft wheels with good shock absorbing properties ensure a quiet working environment.

Design options

Individual design of colour and surface to match the product design.

Chemical-resistant components

Resistant to many cleaning agents. Less maintenance costs due to durability.

↓
You will find the product brochure here:



MASTERING EVERYDAY LIFE COMFORTABLY WITH LEVINA CARE

 **100 kg**  **137 - 161 mm**  **100 - 125 mm**

In the medical environment it is said: there's power in silence. The new patented central locking solution allows caregivers to quietly and easily lock all castors with a single step, reducing the amount of workload. At the same time, it improves safety by preventing unintentional movement when the patient is standing up or lying down. This promotes the patient's rest and strengthens the healing process. Sounds interesting? Then contact us – we will be happy to answer any questions you might have.



Quiet and ergonomic actuation


The smooth actuation simplifies the handling for the staff and provides not only physical relief but also more safety. The low noise during actuation contributes to an undisturbed recovery of the patients.

Design options

Individual design of colour and surface to match the product design.

Examples of colour options:




You will find the product brochure here:



ROBUST AND ERGONOMIC WITH LINEA

 **90 - 150 kg**  **78 - 170 mm**  **75 - 150 mm**

It does not come as a surprise that this castor has been the first choice on the market for years and is used millions of times. The Linea sets the standard for double-wheel castors in the medical sector by combining an elegant design with maximum safety, durability and exceptional resistance to shock loads. It is particularly easy to clean.

Ergonomic design

In contrast to one wheel, our Linea has extremely low pivoting resistance due to the differential action of its two wheels for easy manoeuvrability with little physical effort.

Robust and maintenance-free construction

The enclosed design and wheels with sealed bearings provide protection against splashing water and dirt. Its chemical-resistant components make the Linea impervious to many cleaning agents and chemical substances, while its load-bearing housing ensures a stable construction.

High diversity of variants

The Linea product family offers a variety of designs for the highest demands in the hospital environment. These include models that allow colour matching to the product design, permanently washable versions, castors with different fixings and conductive versions to protect users and electrical equipment from electrostatic discharge.

Die Produktbroschüre finden Sie hier:



LIGHT AND EFFICIENT WITH LINEA LIGHT

 **40 - 100 kg**  **50 - 109,5 mm**  **50 - 100 mm**

Regardless of whether your new product developments require maximum safety, ergonomics, efficiency and usability or your target market requires a cost-efficient product realisation: As a globally active company, we understand the global challenges in the medical field and will support you with trend-setting know-how, many years of experience and comprehensive service – right from the very beginning, from the first development phase of your project.





Variable fixings
To ensure a perfect connection between castor and application, the mobility solutions offer a wide range of mounting options.

Customisable construction
We look at every challenge from a specific angle: from your perspective. Accordingly, the Linea light offers the possibility of a cost-efficient product realisation.

Low maintenance castors
The Linea light castor has a resistant housing and features protective seals against splash water, dirt and cleaning agents.

Award-winning design
The Linea light is convincing not only because of its clear design, which has won international awards, but also because of its versatility. It is not only available in the standard colours, but also in special colours on request, depending on the customer's wishes.

Available in the standard colours:

-  RAL 9002
-  RAL 7001
-  RAL 7015
-  RAL 9011

 Die Produktbroschüre finden Sie hier:



INCREASED SAFETY WITH LINEA CLINIC

 **150 kg**  **130 - 175 mm**  **125 - 150 mm**

Our Linea clinic has a remarkably low overall height, which makes it possible to reduce the height of the application to a minimum. With its low swivel resistance and ergonomic operation, the Linea clinic also takes the burden off healthcare staff, providing them with optimal manoeuvrability and easy operation.

Quiet and ergonomic actuation

The smooth actuation simplifies the handling for the staff and provides not only physical relief but also more safety. The low noise during actuation contributes to an undisturbed recovery of the patients.

Lowest installation height

The XS fitting of Linea is barely higher than the wheel size. With a diameter of 125 millimetres, the overall height of the castor amounts to just 130 millimetres. The clear advantage for hospital bed manufacturers: hexagonal bars can be mounted particularly low.

Low overall height

Our mobility solution features a particularly low overall height, ensuring that medical staff can reduce the height of the application to a minimum.



You will find
the product
brochure
here:



SAFE STAND WITH LINEA LOAD

 **200 kg**  **155 mm**  **150 mm**

With this mobility solution you get the full load of safety. Or more precisely: high load capacity and durability. Increased torsional stiffness for a firm stand of operating tables. Tested electrical conductivity. Low overall height for reduced risks of injury to patients. And, of course, mobility that is unique in terms of both ergonomics and safety.

Low overall height

When used under operating tables, the Linea reduces the risk of accidents due to its low overall height. The lying surface can be positioned particularly low, so that patients and caregivers benefit from a clear plus in safety.



Increased torsional stiffness

In operating theatres, operating tables have to meet particularly strict requirements. Linea load offers outstanding torsional stiffness for this very reason and thus ensures that operating tables stand firmly.

High load capacity

With its higher load capacity of 200 kilograms, the castor is extremely robust and offers a maximum of safety for caregivers and patients.


You will find
the product
brochure
here:



EFFORTLESS OPERATION WITH LINEA E-LOCK

 **150 kg**  **155 mm**  **150 mm**

Our TENTE Linea e-lock is characterised by directional or total locks that can be activated electronically. This not only enables individual control of the castors, but above all effortless operation. Unlocking is done simply and conveniently via a push-button, so that the medical staff is relieved considerably. But that's not all: the system also works very quietly and thus also contributes to the patients' rest and recovery.

High safety

Manufacturers have the possibility to add a motion sensor to the Linea e-lock. The result: a timed automatic locking of the castors and more safety for patients and staff.

Easy and flexible integration

The user-programmable control function can also be integrated into existing control units. By eliminating the actuating rods and kick pedals, new possibilities open up regarding the design of devices.

Quiet working environment

The quiet unlocking provides a comfortable working environment for both the patient and the clinician.



You will find the product brochure here:



EFFICIENT TRANSPORT WITH E-DRIVE

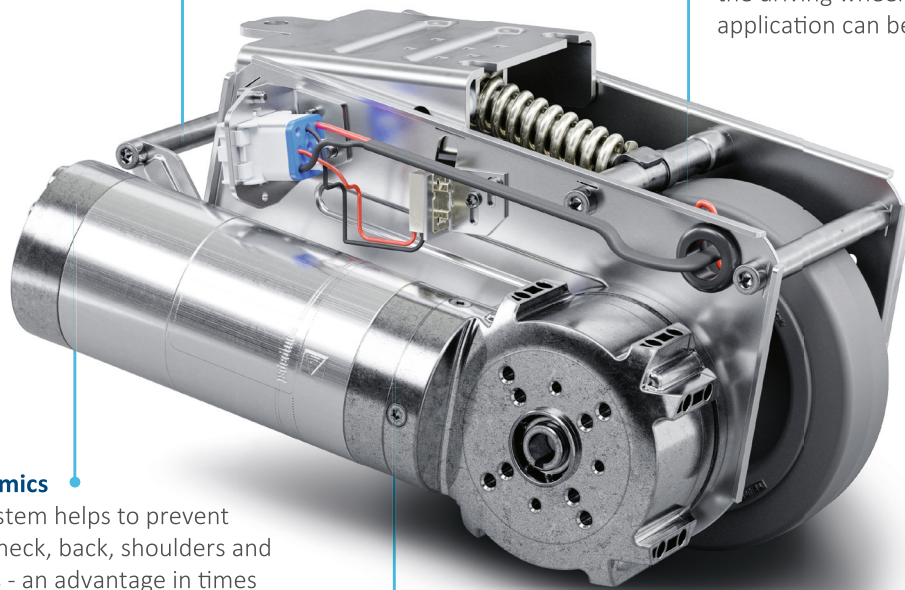
When heavy medical devices need to be moved safely and gently, our motorised castor E-Drive opens up completely new possibilities. It supports the medical staff in starting up and manoeuvring, thus facilitating their work and increasing productivity. The clear advantages: improved work processes, increased quality of care, increased employee satisfaction and reduced sick leave.

Increased productivity

E-Drive helps to improve the efficiency of workflows resulting in cost savings.

Great flexibility

Depending on the customer's needs, the E-Drive can be individually configured. The system can be easily integrated into existing applications. In stand-by mode, the driving wheel is pulled in so that the application can be moved manually.



Improved ergonomics

The ergonomic system helps to prevent discomfort in the neck, back, shoulders and hands of the users - an advantage in times of strong demographic change. Physical relief equals less sick leave. The result is a quick return on investment for E-Drive.

Convenient system solution

The system is easy to integrate and consists of a drive unit, control unit, hand control, battery, battery charger and mounting kit.

↓
You will find the product brochure here:



FULL SERVICES WITH TENTE

1

CONSULTATION

What challenges do you face? What would you like to improve? Safety at work? Efficiency? Productivity? Or all of the above? Our experts listen carefully and set the initial goals together with you.



2

ANALYSIS

By involving the necessary specialists, we get a precise picture of your current situation. Our experts look at all the decisive influencing factors and focus on your individual needs – starting with the requirements in terms of product specifications, through to system integration and delivery times. The entire analysis is carried out in a particular manner: wholly holistically.



3

PRESENTATION OF THE IDEA

We develop a concept idea for a mobility solution that is precisely aligned with your requirements. We present this to you in detail in a presentation and discuss the next steps.



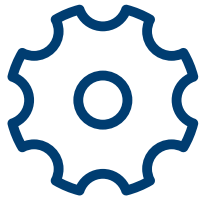
6



FINISHED SOLUTION

We deliver the finished mobility solution and are of course also happy to provide you with comprehensive support afterwards – for example with our all-round carefree service package. Contact us and we will advise you individually.

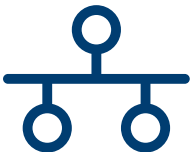
5



SAMPLE / PROTOTYPE

You receive an initial prototype or a certain number of sample castors from us. You can test these extensively in connection with your application before we finally complete the development together.

4



COLLABORATIVE DEVELOPMENT

The idea becomes a reality: In close coordination with you, we realise the planned project. In the process, we use our entire development expertise – and implement the joint concept.

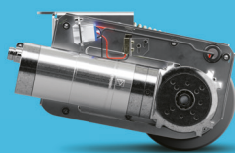
DIVERSITY WITH A SYSTEM: OUR CASTORS

All of our products have their own specific qualities and strengths. Whether it's high design standards, specialist applications or exceptional load capacities – our range can meet your needs and can be adapted to fit different models.

From the correct dimensions and technical specifications to the required configuration, our product families are able to offer the ideal solution – whatever you need.

Contact us for more information or visit our website:
www.tente.com

E-Drive



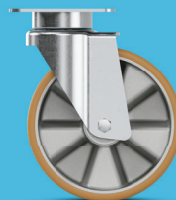
⊞ 600 - 800 kg
⊕ 125 mm

Alpha



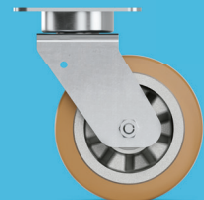
⊞ 70 - 500 kg
⊕ 80 - 200 mm

Delta



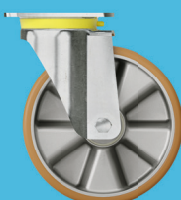
⊞ 300 - 600 kg
⊕ 125 - 200 mm

Delta twin



⊞ 600 - 750 kg
⊕ 125 - 200 mm

Zeta



⊞ 300 - 800 kg
⊕ 125 - 250 mm

Kappa



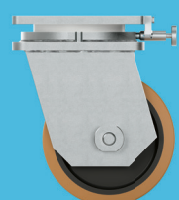
⊞ 300 - 3,000 kg
⊕ 80 - 300 mm

Kappa flex



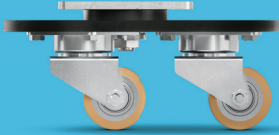
⊞ 360 - 750 kg
⊕ 160 - 200 mm

Omikron



⊞ 900 - 22,500 kg
⊕ 100 - 600 mm

Radiata



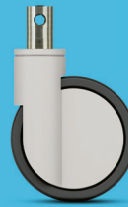
1,200 - 1,500 kg
80 mm

Scout



150 - 350 kg
160 - 200 mm

Integral



100 - 150 kg
100 - 200 mm

Integral twin



125 - 250 kg
100 - 150 mm

Linea clinic



150 - 200 kg
125 - 150 mm

Forma



125 - 150 kg
125 - 150 mm

Aviana care



100 kg
75 mm

Aviana



100 kg
75 mm

Agila



40 - 100 kg
50 - 150 mm

Agila twin



50 - 100 kg
50 - 75 mm

Stora



60 - 160 kg
75 - 160 mm

Mono



30 - 70 kg
50 - 100 mm

Galea



60 - 100 kg
100 - 125 mm

Levina



60 - 100 kg
75 - 150 mm

Linea



40 - 150 kg
50 - 150 mm

Anika



40 - 50 kg
55 - 75 mm

Lumina



10 - 100 kg
35 - 75 mm

Stylea



40 - 100 kg
35 - 100 mm

Smiles



40 kg
50 mm

Compacta



10 - 55 kg
14 - 50 mm

EXPERTISE THAT INSPIRES

CONTACT US

We are a globally operating company supporting you on five continents.

This means on-site support with service on a level playing field – along with in-depth knowledge. Additionally, our solution experts will advise you on the best mobility concept for your needs. Follow this link to find your nearest TENTE location:

www.tente.com/locations

INCREASE YOUR EFFICIENCY

Our intelligent mobility solutions help you save time, effort, energy, and operating expenses. This allows you to improve your operating methods and working conditions, thereby optimising your processes and ensuring higher productivity and profitability, and improved safety. Ask for our solutions catalogue or read about how our customers benefit from our tailor-made solutions on our website:

www.tente.com/solutions

SAVE DEVELOPMENT TIME

On our website you will find technical drawings, product data sheets and 2D and 3D CAD files in various formats:

www.tente.com/products

GET MORE INFORMATION

In addition to our informative website, you can easily download various catalogues and brochures on mobility solutions, customer references, and much more:

www.tente.com/download





www.tente.com



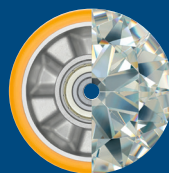
PRODUCTIVITY



SAFETY



DESIGN



DURABILITY



ENVIRONMENT