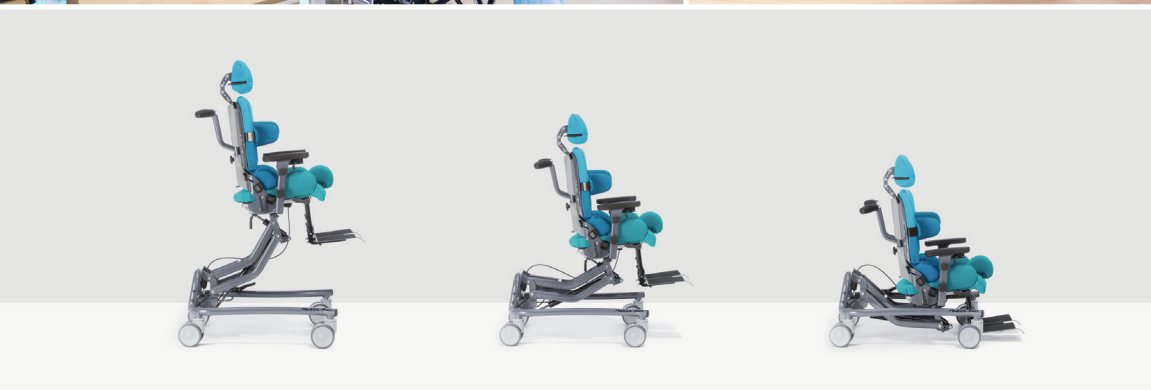


# SOLUTIONS FOR MEDICAL FURNITURE SAFE, INDIVIDUAL AND SUSTAINABLE



**TENTE**

BETTER MOBILITY. BETTER LIFE.



# CONTENTS

## OUR SOLUTIONS

Healthcare furniture with a touch of design .....	<b>3</b>
Safety – one of our excellent competences .....	<b>4</b>
Sustainability – one of our key technologies .....	<b>5</b>
Hygienic – healthy cleanliness .....	<b>6</b>
Uniform design meets functionality .....	<b>7</b>
Laughter is the best medicine .....	<b>8</b>
Excellent in many aspects .....	<b>10</b>

## OUR RANGE OF CASTORS

Wide range with Linea .....	<b>12</b>
Efficient and easy handling with Linea safety .....	<b>13</b>
Quiet and light with Integral .....	<b>14</b>
Mastering everyday life with Levina care .....	<b>15</b>
Flexibility of design and sustainability with Anika .....	<b>16</b>
Friendly atmosphere with Smiles .....	<b>17</b>

## OUR SERVICES FOR YOU

Full services with TENTE .....	<b>18</b>
Diversity with a system: our castors .....	<b>20</b>
Expertise that inspires .....	<b>22</b>

# HEALTHCARE FURNITURE WITH A TOUCH OF DESIGN

Our pioneering mobility solutions for medical furniture combine maximum safety and sophisticated design. Productivity and ergonomics, comfort and sustainability. Above all, we take into account the demands of medical staff, the wishes of patients and the requirements of furniture manufacturers. We succeed in combining all these key factors by always taking a holistic view of the diverse challenges facing the medical sector. In this way, our mobility solutions relieve the user, contribute to the well-being of patients, and fit seamlessly into the design concept of furniture manufacturers. They also ensure outstanding support and complete satisfaction on all sides – in line with the credo: Better Mobility. Better Life.

## SAFETY THAT MOVES

When designing our mobility solutions, we always keep one thing in mind: the protection of their users. Or more precisely: the safety of patients and employees. We understand exactly how important it is to minimise the risk of injury, improve fall prevention, and continually increase safety in the workplace. That's why our castors and wheels for medical furniture impress with their reliable locking systems, low overall height, certified conductivity, ergonomic operation and renowned certificates. That way you can always rely on one thing: safety that moves.

## SUSTAINABILITY THAT WORKS

For us, sustainability is an integral component of our development. Thus, we offer you solutions that are composed of harmless materials, meet the strictest standards, and help to reduce CO<sub>2</sub> emissions. One example of this is our TENTE Anika evo – a castor made of 98% biomass. However, optimisation under the banner of sustainability is also a focus in our manufacturing and supply processes. As part of quality assurance, our production is subject to permanent monitoring. We continuously work on targeted efficiency improvements, pay attention to optimal delivery routes and thus reduce CO<sub>2</sub> emissions. The result: an improved ecological footprint on our precious planet.

On the following pages you will find more information about our different mobility solutions from the furniture industry. Please do not hesitate to contact us for further technical details or a personal consultation. You will find all contact information on page 22.

# SAFETY – ONE OF OUR EXCELLENT COMPETENCES

In the medical environment, the topic of safety has a special relevance. After all, protecting patients, staff and sensitive medical equipment is a top priority – especially when it comes to mobility. This means that suitable solutions must ensure both safe movement and a firm footing. That's precisely why our medical furniture products are distinguished by one very specific attribute: Premium quality. Tested. Certified. And repeatedly awarded.

## YOUR CONCRETE ADVANTAGES

Our intelligent mobility solutions reflect our many years of experience in the medical field. They meet the strictest safety requirements and, in use, have been proven to help prevent accidents, reduce health and injury risks, and protect sensitive equipment. Plus, thanks to their elaborate design, they can help increase workplace safety, minimise sick leave and decrease downtime. Therefore, they also have a positive impact on planning reliability.

**TENTE LINEA SAFETY  
GUARANTEES IMPROVED  
MOBILITY – AND MAXIMUM  
SAFETY – ALWAYS AND  
EVERYWHERE.**

## AS THE NAME ALREADY IMPLIES

The focus of our Linea safety is already indicated in the name of the twin wheel castor. Its locking system provides maximum control and safety. When the user activates the operating lever of the locking device, the castor can be moved. When released, it comes to a complete stop. In other words, the castor is the perfect choice for use on therapy chairs – and of course ensures maximum confidence in other applications as well. Why? You can find out on page 13, where we present the many advantages of the castor in more detail.



↓  
You can find  
the product  
brochure  
here:



*‘TENTE understood our safety requirements perfectly –  
and implemented them with outstanding success.’*

Torsten and Miriam Schuchmann,  
Managing Directors of Schuchmann GmbH & Co. KG

Read more about the customer reference:  
[www.tente.com/schuchmann](http://www.tente.com/schuchmann)



# SUSTAINABILITY – ONE OF OUR KEY TECHNOLOGIES

Protecting the environment is an important concern for all of us. That's why TENTE leads by example and is committed to a green footprint on our valuable planet. It's also why we're pleased to present the following product:

## **ANIKA EVO – THE FIRST CASTOR PRODUCT RANGE MADE FROM ORGANIC MATERIALS.**

Anika evo is made of 98%\* biomass materials. These natural raw materials are obtained from the castor bean. Despite its special production process, Anika evo offers the same product quality and colour range as the proven Anika furniture castor.

TENTE is the first manufacturer to use a sustainable granulate obtained from the castor bean in the production of a furniture castor. In this way, we reduce CO<sub>2</sub> emissions by 60%\*\* and ease the burden on the environment.

But in developing our many other mobility solutions, we are also, of course, working with one of our most important partners: the environment. Protecting ecological resources, preventing waste and reducing environmental impact are integral parts of our production.

With the high standards we set ourselves, we also pay tribute to the ambitious goals of our customers in the furniture industry and meet the special requirements of manufacturers. But how do we succeed in doing just that? By combining our many years of technical expertise with cutting-edge materials of the highest raw material quality. We strive to make the most demanding environmental standards the norm.



\*98% calculated from the total weight of synthetic material used to manufacture our product.

\*\*60% calculated according to life cycle management standards of ISO 14040.

# HYGENIC – HEALTHY CLEANLINESS

Mobility solutions that set standards in terms of hygiene are a matter of course for us. After all, specific castors and wheels such as our TENTE Levina and Linea meet the highest hygiene requirements and set new standards time and again.

## ALL SET FOR WATER

We support you with solutions that are completely safe for contact with water – for example, as part of cleaning processes. Thanks to a well thought-out design, the water cannot stay in the castor, but runs through it without leaving any residue. Deposits of detergents? No chance at all. This also represents an enormous advantage in personal hygiene: the patient can be moved into the shower together with their mobility assistance without worrying about negative effects on the condition and cleanliness of the castors.



## DUST-RESISTANT DESIGN

Another factor that positively influences hygiene: the geometry of our mobility solutions. Their shape makes it very difficult for dust to settle and the castors are uncomplicated to clean by hand.

## SOLUTIONS FOR CLEANROOMS

In certain areas, very strict specifications prevail when it comes to the condition of the devices used. No problem for us! We offer suitable castors and wheels for cleanroom applications. These include conductive products that are stainless and offer sealed bearings. However, due to the complex requirements, individual consultation is usually necessary. So it's best to contact us today and let us work together to find a customised solution for you.

# UNIFORM DESIGN MEETS FUNCTIONALITY

When it comes to mobility solutions for medical furniture, the overall picture has to be right. However, this does not only imply a uniform look, but also the perfect interplay of ergonomics, functionality and safety. This is exactly where we come in with our versatile product range.

## VERSATILE FUNCTIONS

Our castors and wheels are available in various sizes and offer the right features for every application, from ergonomic locking systems to an extremely low overall height.

## OPTICS FROM ONE CAST

Our products follow the individual design language of the furniture manufacturers and thus contribute to a harmonious overall picture. An overall picture that sets standards. This is also highlighted by the numerous prestigious awards with which our mobility solutions have already been honoured.

So if you are looking for suitable castors and wheels for your medical furniture, you have found the ideal partner in us.



### Do you have any questions?

Then simply use our contact form to get in touch with one of our experts:

[www.tente.com/contact](http://www.tente.com/contact)



*'The uniform design of the TENTE product family enables us to establish a unique market position.'*

Siegfried Greiner, Kristina Greiner  
Managing Directors of Greiner GmbH







# LAUGHTER IS THE BEST MEDICINE

Health has many faces – but the smiling ones stand out particularly. This is exactly what we took into account when we developed our Smiles. The castors are deliberately designed to be playful and child-friendly, and have been specially developed for use in settings with young patients.

## WHETHER A BEAR, COW OR A MOUSE – THE SMILES MAKE YOUR EYES LIGHT UP.

### MORE THAN JUST A SMILE

When used on drip stands, the friendly faces of the castors not only have a positive effect on children's well-being, but also support the stimulation of movement. This is because the little ones want to get the friendly mobility solutions rolling – and thus become active themselves. And when it comes down to it, of course, our Smiles also guarantee a safe standing position.

The castors are available with wheel treads for soft or hard floors. They impress with their easy manoeuvrability and make it possible to negotiate door and elevator thresholds effortlessly.

### WIDE RANGE OF USE

However, our Smiles are not only recommended for drip stands. They are available with various mounting options and are also ideal for other medical furniture. In the process, they open up numerous colour options for manufacturers to integrate the castors into their own product design.



*'The Smiles do what their name implies: put a smile on the faces of patients, both young and old alike.'*

Micha Hilverkus, Managing partner of provita

Read more about the customer reference:  
[www.tente.com/provita](http://www.tente.com/provita)

# EXCELLENT IN MANY ASPECTS



Integral



Integral twin



## OUR DESIGN AWARDS:



Our smart mobility solutions for medical furniture not only impress manufacturers and users – but also the jury of renowned design awards. They stand out with their practical design, which takes functionality to a new aesthetic level. Their design contributes to the improved comfort and well-being of patients, relieves staff and increases safety.

At the same time, we offer manufacturers a wide range of design options so that our castors and wheels can be seamlessly integrated into the corporate design of our customers. In this way, our solutions set both visual and practical accents – and are excellent in many respects.

Levina

Linea

Anika

Smiles



# WIDE RANGE WITH LINEA

 **40 - 100 kg**    **50 - 103 mm**    **50 - 100 mm**

When it comes to making individual adjustments and carrying the weight of heavy furniture, Linea are the ideal mobility solution. Their special feature: despite their compact size, Linea castors are convincing with their outstanding level of durability and load capacity.

## High load capacity

Linea load has a wheel diameter of only 50 millimetres and nevertheless impresses with a load capacity of up to 100 kilograms. Linea light features a bigger wheel diameter and is also designed for loads up to 100 kilograms.

## Variable fittings

To ensure a perfect connection between the castor and the application, the mobility solutions offer a wide range of mounting options.

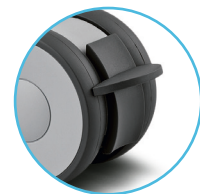
## Ergonomic kick pedal

From a diameter of 65 millimetres upwards, the castors have an ergonomic wheel lock. The lock can be released simply and effortlessly by kicking on it, therefore ensuring comfortable handling and good ergonomics.

## Individual branding

Whether it's for a logo, name or corporate colour – our mobility solutions open up great design freedom and leave nothing to be desired, especially in terms of colour. It's also possible, for example, to order designs in gold or silver.

## With a kick pedal:



You can find the product brochure here:



*'The Linea castor that makes a small, but fine difference.'*

Gregory Durin, Linea and furniture expert





# EFFICIENT AND EASY HANDLING WITH LINEA SAFETY

 **80 - 100 kg**    **81 - 129 mm**    **75 - 100 mm**

Linea safety makes daily work even more efficient and secure. This is because the castor can only be set in motion by actively actuating the operating element of the locking device. Once released, the mobility solution automatically and immediately comes to a full stop. The result: unintentional movements are prevented.



## Working safety and control

The integrated safety function blocks several castors simultaneously via an operating lever. The castors can only be moved when the user activates a lever or handle.

## Bowden cable with different locking mechanisms possible:



## Individual look

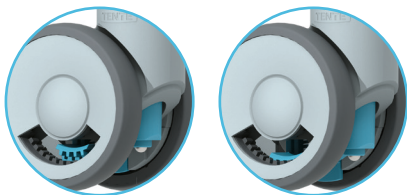
At your request, the wheels can be printed with different designs and made in different colours.

## Efficient work

The user-friendly central locking system allows simultaneous locking and unlocking of several castors with just one lever. In this way, productivity can be increased perceptibly.

## Easy manoeuvrability

The differential action of the twin wheel castor makes the castor easy to steer and gives it good manoeuvrability.



You can find the product brochure here:



# QUIET AND LIGHT WITH INTEGRAL

 **100 - 150 kg**    **130 - 229 mm**    **100 - 200 mm**

It is not surprising that this castor has been the first choice on the market for years and has been used millions of times. After all, our Integral sets the standard for one-wheeled castors in the medical sector by combining attractive design with high safety, durability and exceptional shock resistance. It is particularly easy to clean and maintain and has a safety standard certified by the German standard "TÜV Süd". Due to the high level of automation in production, you can rely on consistently high quality across the entire product family.

## Quiet and easy actuation

Whether directional locking, total locking or full movement – the Integral enables low-noise and ergonomically easy actuation. In this way, it reduces the workload of nursing staff, increases safety and helps to ensure that patients are not disturbed. Its soft wheels were specially developed for the quiet hospital environment and impress with their smooth-running properties.



## Robust and maintenance-free construction

The enclosed design and wheels with sealed bearings provide protection against splashwater and dirt. The chemical-resistant components make the Integral resistant to many cleaning agents and chemical substances, while the load-bearing housing made of stainless steel or sheet steel provides a robust construction.

## Different versions available

The Integral product family offers a wide range of designs for the highest demands in the medical environment. These include options that allow colour matching with the product design, permanently washable versions, castors with different accessories, and conductive versions to protect users and electrical equipment from electrostatic discharge.

You can find the product brochure here:



# MASTERING EVERYDAY LIFE COMFORTABLY WITH LEVINA CARE

 **100 kg**    **137 - 161 mm**    **100 - 125 mm**

In the medical environment it is said: there's power in silence. The new patented central locking solution allows caregivers to quietly and easily lock all castors with a single step, reducing the amount of workload. At the same time, it improves safety by preventing unintentional movement when the patient gets up or lies down. This promotes the patient's rest and strengthens the healing process. Sounds interesting? Then contact us – we will be happy to answer any questions you might have.



## Low-noise and ergonomic actuation

The easy actuation makes it easier for employees to handle and not only provides physical relief, but also more safety. The low noise level during actuation contributes to the undisturbed recovery of the patients.

## Design options

Individual design of colour and surface on request to match the corporate design.

## Examples of colour variations:



You can find the product brochure here:



# FLEXIBILITY OF DESIGN AND SUSTAINABILITY WITH ANIKA

 **40 - 50 kg**    **57 - 77 mm**    **55 - 75 mm**

Whether it's a matter of shape or colour – our Anika product family offers furniture designers flexible and customisable options. The subtle design language is also remarkable: the castor is not rounded and does not appear bulky. Its narrow width, thin profile and sharp angles create a slim design. The evo version of the castor sets new standards in terms of sustainability. This is because it consists of up to 98% biomaterials and still offers the same product quality and colour range as the other versions.

## Wide range of designs

Another special advantage for designers: the many options for individual design. For example, the brake lever can be adapted to the customer's needs.

## Other examples:



## Seamless integration

At the customer's request, the fittings can be fully customised to achieve a perfect connection of the wheel with the piece of furniture.

## Other examples:



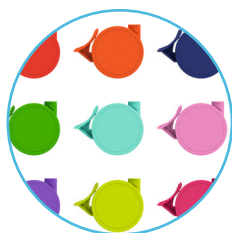
## Ecological relief

The use of harmless materials and compliance with the strictest environmental standards conserves resources and improves the eco-balance. This means that the castor not only meets the highest demands – but also the special market requirements in the area of sustainability.

## Individual colour scheme

For the individual design of the castor any colour is possible – even gold and chrome. In addition, all elements can be coloured according to your own wishes, starting with the housing, the wheel and the treads right up to the wheel brake.

## Various colours available:



## Anika evo – our first castor made of renewable materials:



You can find the product flyer here:



You can find the product brochure here:





# FRIENDLY ATMOSPHERE WITH SMILES

 **40 kg**    **71.5 mm**    **50 mm**

The playful design of the Smiles product family puts a smile on your face with its special features. Whether in the shape of a mouse, a cow, a plane or a bear – the castors are recommended for use under desk chairs, toy containers, chests of drawers, infusion stands and other medical furniture. They can be colour-coordinated with the furniture manufacturer's product design and printed with the customer's logo.

## Wide range of mounting options

The selection of fittings is as versatile as the children's furniture itself. The fittings are available in various sizes and not only guarantee easy mounting, but also ensure that the castors can be quickly replaced.

## Secure stance

The wheel lock for manual operation ensures high stability on flat surfaces and inclined planes and prevents unintentional movement.

## Flexible design

Whether in the shape of a mouse, a cow, a plane or a bear – the castors are designed for the colourful world of children's rooms. All colours are available and can be flexibly adapted to the product design of the furniture manufacturer.

## Non-hazardous materials

The child-friendly mobility solution also meets the highest standards for the materials used, of course. These comply with the RoHS and REACH regulations and contain neither polycyclic hydrocarbons nor hexavalent chromium (VI).

## More design examples:



Bear



Cow



Mouse



Plane



You can find the product brochure here:



# FULL SERVICES WITH TENTE

1

## CONSULTATION

What challenges do you face? What would you like to improve? Safety at work? Efficiency? Productivity? Or all of the above? Our experts listen carefully and set the initial goals together with you.



2

## ANALYSIS

By involving the necessary specialists, we get a precise picture of your current situation. Our experts look at all the decisive influencing factors and focus on your individual needs – starting with the requirements in terms of product specifications, through to system integration and delivery times. The entire analysis is carried out in a particular manner: wholly holistically.



3

## PRESENTATION OF THE IDEA

We develop a concept idea for a mobility solution that is precisely aligned with your requirements. We present this to you in detail in a presentation and discuss the next steps.



6



#### **FINISHED SOLUTION**

We deliver the finished mobility solution and are of course also happy to provide you with comprehensive support afterwards – for example with our all-round carefree service package. Contact us and we will advise you individually.

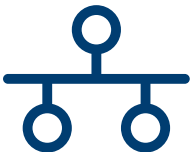
5



#### **SAMPLE / PROTOTYPE**

You receive an initial prototype or a certain number of sample castors from us. You can test these extensively in connection with your application before we finally complete the development together.

4



#### **COLLABORATIVE DEVELOPMENT**

The idea becomes a reality: In close coordination with you, we realise the planned project. In the process, we use our entire development expertise – and implement the joint concept.

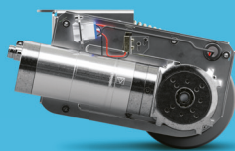
# DIVERSITY WITH A SYSTEM: OUR CASTORS

All of our products have their own specific qualities and strengths. Whether it's high design standards, specialist applications or exceptional load capacities – our range can meet your needs and can be adapted to fit different models.

From the correct dimensions and technical specifications to the required configuration, our product families are able to offer the ideal solution – whatever you need.

Contact us for more information or visit our website:  
[www.tente.com](http://www.tente.com)

E-Drive



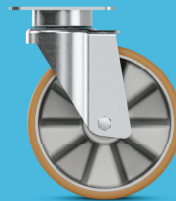
⊞ 600 - 800 kg  
⊕ 125 mm

Alpha



⊞ 70 - 500 kg  
⊕ 80 - 200 mm

Delta



⊞ 300 - 600 kg  
⊕ 125 - 200 mm

Delta twin



⊞ 600 - 750 kg  
⊕ 125 - 200 mm

Zeta



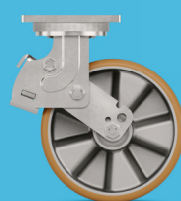
⊞ 300 - 800 kg  
⊕ 125 - 250 mm

Kappa



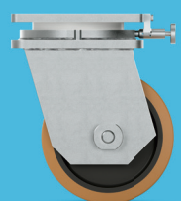
⊞ 300 - 3,000 kg  
⊕ 80 - 300 mm

Kappa flex



⊞ 360 - 750 kg  
⊕ 160 - 200 mm

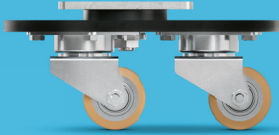
Omikron



⊞ 900 - 22,500 kg  
⊕ 100 - 600 mm



Radiata



1,200 - 1,500 kg  
80 mm

Scout



150 - 350 kg  
160 - 200 mm

Integral



100 - 150 kg  
100 - 200 mm

Integral twin



125 - 250 kg  
100 - 150 mm

Linea clinic



150 - 200 kg  
125 - 150 mm

Forma



125 - 150 kg  
125 - 150 mm

Aviana care



100 kg  
75 mm

Aviana



100 kg  
75 mm

Agila



40 - 100 kg  
50 - 150 mm

Agila twin



50 - 100 kg  
50 - 75 mm

Stora



60 - 160 kg  
75 - 160 mm

Mono



30 - 70 kg  
50 - 100 mm

Galea



60 - 100 kg  
100 - 125 mm

Levina



60 - 100 kg  
75 - 150 mm

Linea



40 - 150 kg  
50 - 150 mm

Anika



40 - 50 kg  
55 - 75 mm

Lumina



10 - 100 kg  
35 - 75 mm

Stylea



40 - 100 kg  
35 - 100 mm

Smiles



40 kg  
50 mm

Compacta



10 - 55 kg  
14 - 50 mm

# EXPERTISE THAT INSPIRES

## CONTACT US

We are a globally operating company supporting you on five continents.

This means on-site support with service on a level playing field – along with in-depth knowledge. Additionally, our solution experts will advise you on the best mobility concept for your needs. Follow this link to find your nearest TENTE location:

[www.tente.com/locations](http://www.tente.com/locations)

## INCREASE YOUR EFFICIENCY

Our intelligent mobility solutions help you save time, effort, energy, and operating expenses. This allows you to improve your operating methods and working conditions, thereby optimising your processes and ensuring higher productivity and profitability, and improved safety. Ask for our solutions catalogue or read about how our customers benefit from our tailor-made solutions on our website:

[www.tente.com/solutions](http://www.tente.com/solutions)

## SAVE DEVELOPMENT TIME

On our website you will find technical drawings, product data sheets and 2D and 3D CAD files in various formats:

[www.tente.com/products](http://www.tente.com/products)

## GET MORE INFORMATION

In addition to our informative website, you can easily download various catalogues and brochures on mobility solutions, customer references, and much more:

[www.tente.com/download](http://www.tente.com/download)







[www.tente.com](http://www.tente.com)



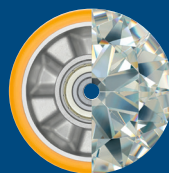
PRODUCTIVITY



SAFETY



DESIGN



DURABILITY



ENVIRONMENT