

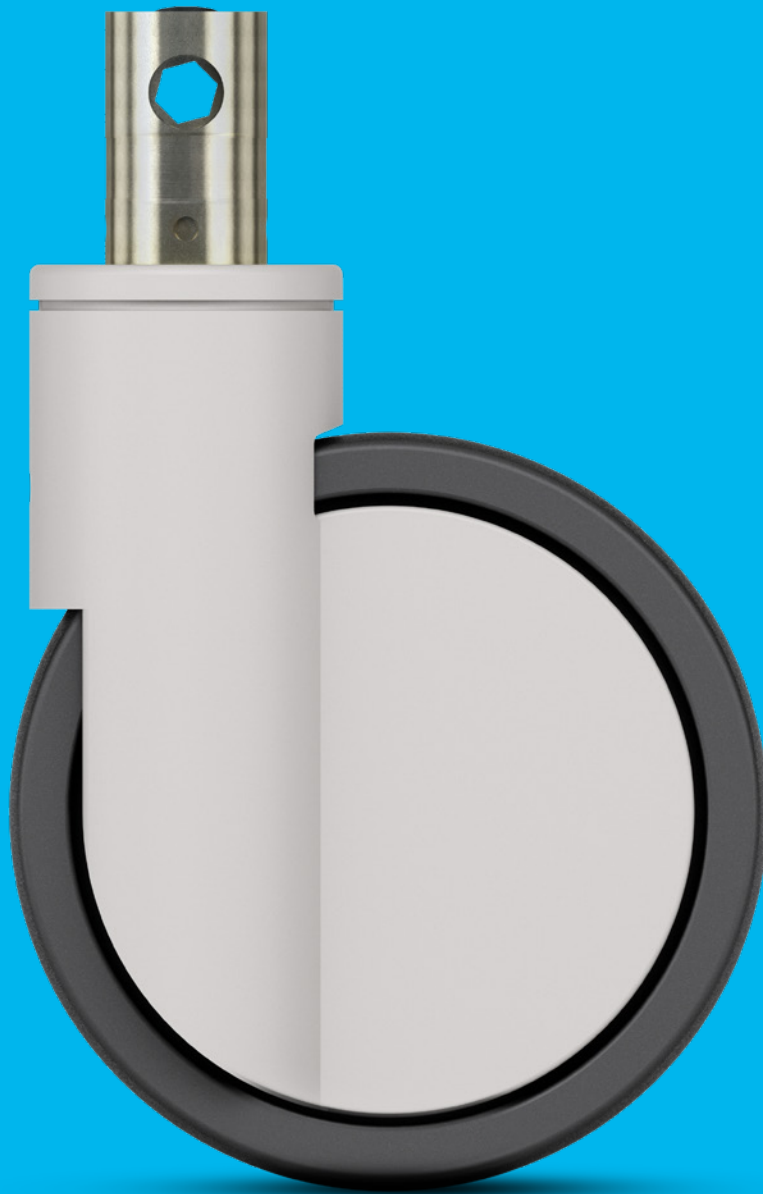
PRODUCT INFORMATION

INTEGRAL

 100 - 150 kg

 130 - 229 mm

 100 - 200 mm

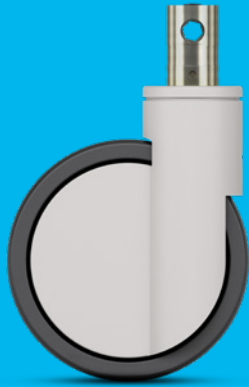


TENTE

BETTER MOBILITY. BETTER LIFE.

INTEGRAL

Full choice of customisable product solutions.



HOUSINGS
PAGES: 6-11



WHEELS
PAGES: 12-15



FITTINGS
PAGES: 16-19

INTEGRAL SMART

Selected standard products.



SMART VERSION
PAGES: 20-23

MOBILITY FROM THE WORLD MARKET LEADER

TENTE believes in smart mobility solutions which noticeably improve people's lives and their working environment. As the world market leader in hospital bed castors, we have developed many customer-focussed solutions which increase productivity, ensure safety and open up new horizons in matters of design, durability as well as environmental friendliness. Leading manufacturers and companies of different industries rely on these competencies and our high production quality.

On the following pages you will find technical information about our Integral product family. We will also explain the added value this mobility solution offers to your organisation. Features include:

Quiet and smooth actuation

Very low actuation forces ensure smooth and quiet operation.

Highly customisable

Adjust angles, brake and actuation forces to your needs.

Fast assembly

Our quick-fitting solution makes for fast assembly.

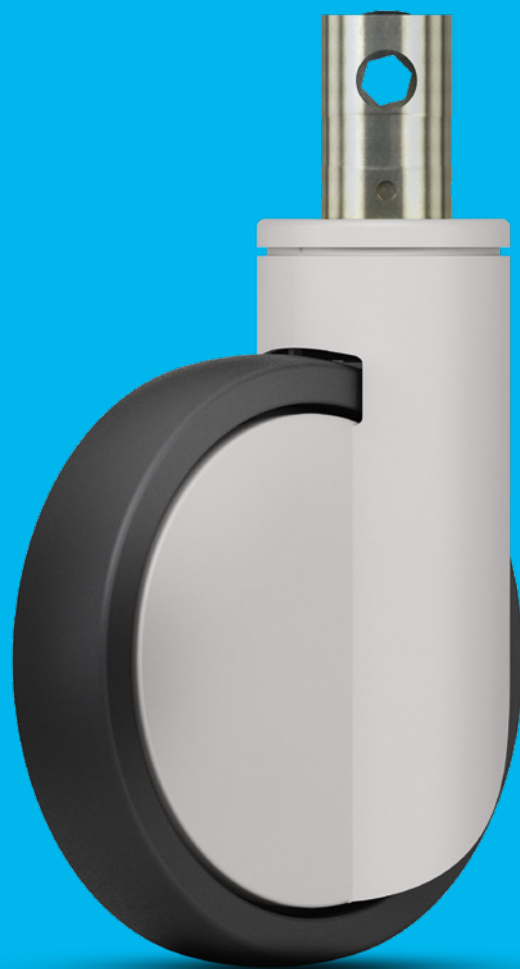


product
design
award



reddot
design
award

INTEGRAL



FEATURES



Reduced cleaning

The castors have smooth, easy-to-clean surfaces.



Award-winning design

Awarded with prestigious prizes by international juries.



Certified safety

TÜV Süd certified performance standard.



Permanent washability

All-metal options with components made of stainless steel.



Chemical-resistant components

Resistant to many cleaning agents and chemical substances.

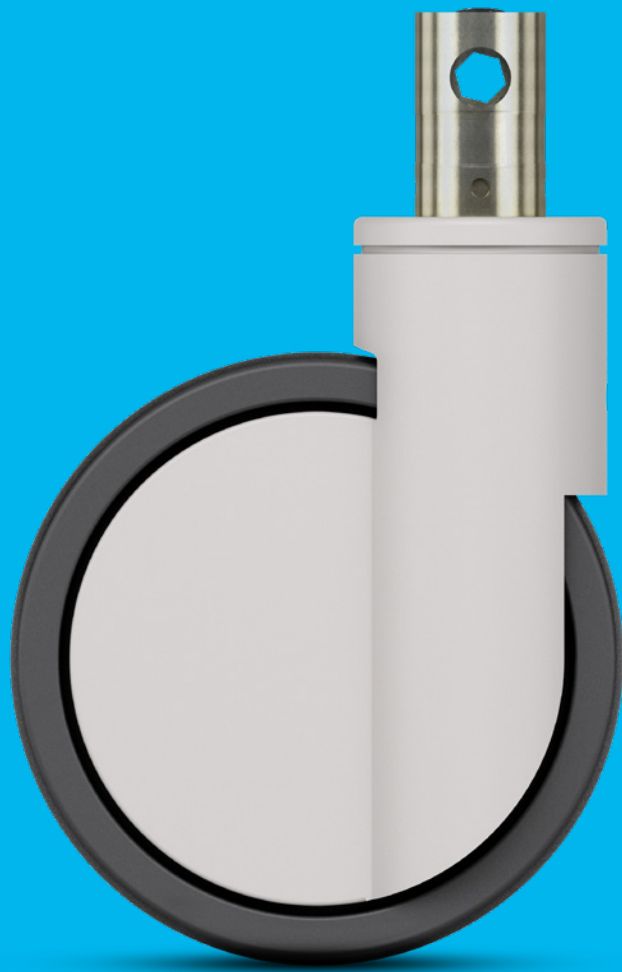


Colour matching

Colours can be adapted to match the product design. Standard colours:

-  RAL 9002
-  RAL 9006
-  RAL 9011

HOUSINGS



FEATURES



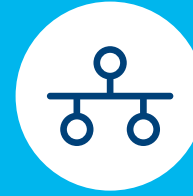
Optimised steering mechanism

Directional lock for improved steering around curves, as well as moving in a straight line over long distances.



User-friendly central lock

Simultaneous locking of more than one castor using a central actuation lever.



Practical system solution

Practical system solution with all technical components for central locking.



Easy steering

Precision ball bearing in swivel head.



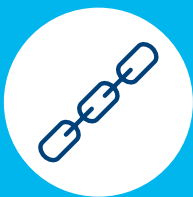
Multistage switching function

Up to three locking positions: directional lock, total lock or free mobility.



Secured stand

Total lock for simultaneously locking the wheel and swivel housing.



Extremely strong construction

Main load carried by an inner fork which is made of pressed stainless steel or pressed steel.

HOUSINGS

The frame is made of pressed steel or pressed stainless steel, with a precision ball bearing in the swivel head and wheel. The housing cover is made of synthetic materials and the stem has a cam hole for profile bars for central locking. The castors have smooth, easy-to-clean surfaces.

Swivel castor

Wheel and housing are free to move for easy manoeuvrability.

Central total and directional lock

User-friendly central lock for simultaneous locking of more than one castor. Combined directional lock for improved steering around curves, as well as movement in a straight line over long distances. Total lock for simultaneously locking the wheel and swivel bearing for a secure standing.



The materials are tested in our own laboratory for compliance with European standards. Non-hazardous materials are used in order to comply with the RoHS directive and REACH regulation of the European Union. These do not contain polycyclic aromatic hydrocarbons or chromium (VI). All components are resistant to many cleaning agents and chemical substances.


• **Central total lock**

Simultaneous locking of the wheel and swivel bearing for secure standing with more than one castor.



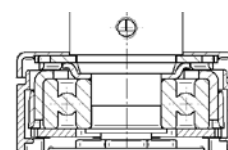
Standard castors



 Description	Housing type	Swivel castor	Swivel castor with central total or directional lock	Swivel castor with central total lock
	Article description	2040	2044	2046
	Frame material	Pressed steel	Pressed steel	Pressed steel
	Housing cover material	Synthetic	Synthetic	Synthetic
	Swivel bearing	Precision ball bearing	Precision ball bearing	Precision ball bearing
	Washable	-	-	-
 Swivel interference	Wheel \varnothing 100 mm	-	-	-
	Wheel \varnothing 125 mm	195 mm	195 mm	195 mm
	Wheel \varnothing 150 mm	230 mm	230 mm	230 mm
	Wheel \varnothing 200 mm	320 mm	320 mm	320 mm

Items with this sign "-" are not available in our standard range. Please contact us.


Swivel bearing



Precision ball bearing for best manoeuvrability.

Washable castors

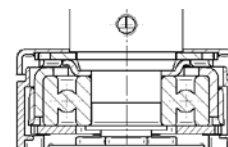


 Description	Housing type	Swivel castor	Swivel castor with central total or directional lock	Swivel castor with central total lock
	Article description	7040	7044	7046
	Frame material	Pressed stainless steel	Pressed stainless steel	Pressed stainless steel
	Housing cover material	Synthetic	Synthetic	Synthetic
	Swivel bearing	Precision ball bearing	Precision ball bearing	Precision ball bearing
	Washable*	●	●	●
 Swivel interference	Wheel Ø 100 mm	-	-	-
	Wheel Ø 125 mm	-	-	-
	Wheel Ø 150 mm	230 mm	230 mm	230 mm
	Wheel Ø 200 mm	-	-	-

Items with this sign "●" are available. Items with this sign "-" are not available in our standard range. Please contact us.

* Washable versions with metal components made of stainless steel. Washable castors must be sealed in the fitting area by the customer.

Swivel bearing

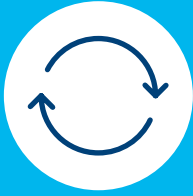


Precision ball bearing for best manoeuvrability.

WHEELS



FEATURES



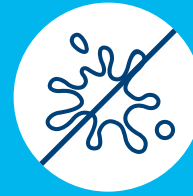
Comfortable manoeuvrability

Outstanding swivel and rolling properties due to optimised tread geometry and material selection.



Non-marking movement

Wheels with reduced abrasion and little cleaning requirement.



Non-staining operation

Non-staining on contact with floors during long standing periods.



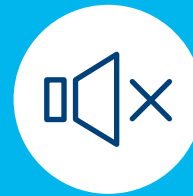
Certified conductivity

Conductive versions to protect users and electrical devices from electrostatic discharge.



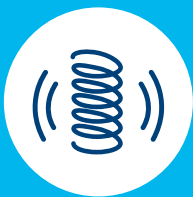
Protective seal

Optional wheels with sealed bearings to protect against spray water and dirt.



Quiet rolling

Soft wheel option for quieter mobility.



Low-vibration transport

Optional wheels with extra soft tread centre and good shock absorbing properties.

WHEELS

Precision ball bearings, polyurethane treads and wheels with excellent geometry ensure minimal pushing force and easy manoeuvrability of the wheels. Durability, stability and washability are basic requirements.



Maxtech

Extremely hard-wearing and hygienic. Perfect for functional design, injection-moulded polyurethane. Option: washable, with sealed precision ball bearing.



Maxtech soft

Extremely hard-wearing and hygienic. Perfect for functional design, injection-moulded polyurethane. With extra soft tread centre for good shock absorbing properties.




Maxtech conductive

Polyurethane with certified conductivity to protect users and electrical devices against electrostatic discharge. Conductive castors get a yellow cap as standard, making them easily identifiable.

Technical data and availability



		Product name	Maxtech	Maxtech	Maxtech conductive	Maxtech soft
		Article description	UAP	UAX	XSX	HAP
Description	Tread material	Polyurethane	Polyurethane	Polyurethane	Polyurethane sandwich	
	Tread hardness	Shore D 42	Shore D 42 or D 59***	Shore D 40	Shore D 42 and shore A 70	
	Wheel body material	Polyamide	Polyamide	Polyamide	Polyamide	
	Temperature range	-30 °C / +80 °C	-30 °C / +80 °C	-30 °C / +80 °C	-30 °C / +80 °C	
	Width of tread	32 mm	32 - 35 mm****	32 - 35 mm****	32 mm	
	Electric conductive (10 ⁴ OHM)	-	-	●	-	
	Washable*	-	●	●	-	
	Bearing type	Plain bearing	-	-	-	-
Roller bearing		-	-	-	-	
Cone ball bearing		-	-	-	-	
Precision ball bearing		●	● Sealed	● Sealed	●	
Load capacity**	Wheel Ø 100 mm	-	-	-	-	
	Wheel Ø 125 mm	150 kg	150 kg	150 kg	-	
	Wheel Ø 150 mm	150 kg	150 kg	150 kg	150 kg	
	Wheel Ø 200 mm	-	150 kg	150 kg	-	

Items with this sign "●" are available. Items with this sign "-" are not available in our standard range. Please contact us.

* Washable versions have a sealed wheel precision ball bearing. Washable castors must be sealed in the fitting area by the customer.

** Load capacity according to DIN 12531.

*** Shore D 42 in diameter 100 - 150 mm and Shore D 59 in wheel diameter 200 mm.

**** Width of tread of castors with wheel diameter 125 - 150 mm have 32 mm and castors with diameter 200 mm 35 mm width.

Swivel bearing



Precision ball bearing for highest performance.



Load capacity

The load capacity depends on the housing and wheel. It has been tested and fulfills the requirements according to EN 12531 at a speed of 4 km/h. When using four castors, calculate the necessary load capacity as follows: The weight of the application plus the additional load divided by three castors.

$$\frac{\text{Weight of application} + \text{load}}{3} = \text{Load capacity of one castor}$$

FITTINGS



FEATURES



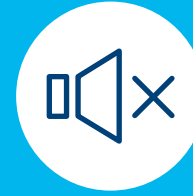
Fast assembly

Faster assembly thanks to an easy, quick-fitting solution.



Highly customisable

Adjust angles, brake and actuation forces to your needs.



Quiet and smooth actuation

Easy activation makes for smooth - and quiet - use.



Tested quality

Tested in our own laboratory in compliance with European standards.

FITTINGS

For an easy mounting into tubes, we offer different solid stem fittings. You can choose between different sizes and locking functions. The stems are highly customisable. Very low actuation forces ensure smooth and quiet operation. We also offer a special fitting type for fast assembly.

Stems with central locking function

Choose between central total lock or central total and directional lock. Very low actuation forces ensure smooth and quiet operation. The switching angles, brake and actuation forces are adaptable to your needs. Contact us.

Cam hole
To connect the castors by profile bars.

QUIET & SMOOTH



Quick fitting

Save assembly time and material costs with a stem with octagonal profile. Fitting screws are not necessary.

Thread
For safe fixation with screws.



Solid stem

Easy mounting in tubes. For a long-lasting use, the stem is bright zinc plated and blue passivated.

Technical data and availability

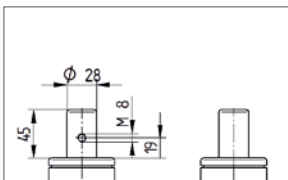


Description	 Fitting type	Solid stem	Stem with central total lock or central total and directional lock	Solid stem	Stem with central total lock or central total and directional lock	Stem with central total lock or central total and directional lock
	Article description	R05-28	R26-28	R05-32	R36-32	R36-34
	Shape	Round	Round	Round	Round	Round with octagonal profile
	Thread for fixation screw	M8	4 x M8	M6	4 x M6	-
	Thread position from bottom	19 mm	19 mm	7 mm	7 mm	-
	Solid stem \varnothing	28 mm	28 mm	32 mm	32 mm	32 mm
	Solid stem length	45 mm	96 mm	45 mm	50 mm	51 mm
	Shifting angles	-	30° or 45°	-	30° or 45°	30° or 45°
	Spring type for actuation torques	-	Soft, standard or hard	-	Soft, standard or hard	Soft, standard or hard
	Overall height 	Wheel \varnothing 100 mm	-	-	-	-
Wheel \varnothing 125 mm		158 mm	158 mm	158 mm	158 mm	-
Wheel \varnothing 150 mm		183 mm	183 mm	183 mm	183 mm	-
Wheel \varnothing 200 mm		229 mm	229 mm	229 mm	229 mm	229 mm

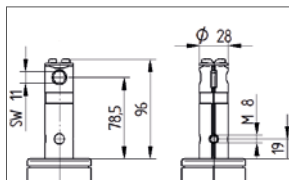
Items with this sign "-" are not available in our standard range. Please contact us.

Technical drawings

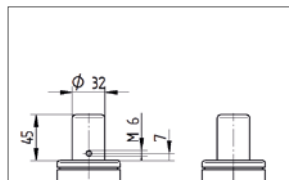
R05-28



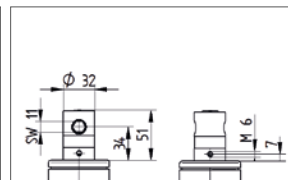
R26-28



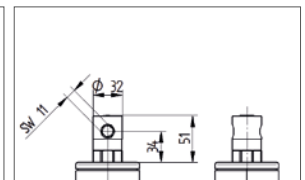
R05-32



R36-32



R36-34



INTEGRAL SMART



INTEGRAL SMART

For some standard versions the Integral is also available as a smart version in 100, 125 and 150 mm diameters with a reduced load capacity. An additional 100 mm diameter option offers an extremely low overall height of 130 mm.

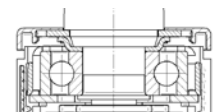


Housing versions



Description	Housing type	Swivel castor	Swivel castor with central total or directional lock	Swivel castor with central total lock
	Acticle description	1040	1044	1046
	Frame material	Pressed steel	Pressed steel	Pressed steel
	Housing cover material	Synthetic	Synthetic	Synthetic
	Swivel bearing	Precision ball bearing	Precision ball bearing	Precision ball bearing
	Washable*	● **	● **	● **
Swivel interference	Wheel Ø 100 mm	180 mm	180 mm	180 mm
	Wheel Ø 125 mm	195 mm	195 mm	195 mm
	Wheel Ø 150 mm	230 mm	230 mm	230 mm
	Wheel Ø 200 mm	-	-	-

Swivel bearing



Precision ball bearing for best manoeuvrability.

Items with this sign "●" are available. Items with this sign "-" are not available in our standard range. Please contact us.

* Washable versions with sealed wheel precision ball bearing. Washable castors must be sealed in the fitting area by the customer.

** Just castors in diameter 100 mm are washable.

Wheel versions



		Maxtech	Maxtech	Maxtech conductive	Maxtech conductive
		Description		UAP	UAX
Product name		Polyurethane	Polyurethane	Polyurethane	Polyurethane
Article description		Shore D 42	Shore D 42	Shore D 40	Shore D 40
Tread material		Polyamide	Polyamide	Polyamide	Polyamide
Tread hardness		-30 °C / +80 °C	-30 °C / +80 °C	-30 °C / +80 °C	-30 °C / +80 °C
Wheel body material		32 mm	32 mm	32 mm	32 mm
Temperature range		-	-	●	●
Width of tread		-	●	-	●
Electric conductive (10 ⁴ OHM)		-	-	-	-
Washable*		-	-	-	-
Bearing type		-	-	-	-
Plain bearing		-	-	-	-
Roller bearing		-	-	-	-
Cone ball bearing		●	● Sealed	●	● Sealed
Precision ball bearing		100 kg	100 kg	100 kg	100 kg
Load capacity **		135 kg	-	135 kg	-
Wheel Ø 100 mm		135 kg	-	135 kg	-
Wheel Ø 125 mm		-	-	-	-
Wheel Ø 150 mm		-	-	-	-
Wheel Ø 200 mm		-	-	-	-

Items with this sign "●" are available. Items with this sign "-" are not available in our standard range. Please contact us.

* Washable versions with sealed wheel precision ball bearing. Washable castors must be sealed in the fitting area by the customer.

** Load capacity according to DIN 12531.

Swivel bearings



Precision ball bearing for highest performance.



Load capacity

The load capacity depends on the housing and wheel. It has been tested and fulfills the requirements according to EN 12531 at a speed of 4 km/h. When using four castors, calculate the necessary load capacity as follows: The weight of the application plus the additional load divided by three castors.

$$\frac{\text{Weight of application} + \text{load}}{3} = \text{Load capacity of one castor}$$

Fitting versions

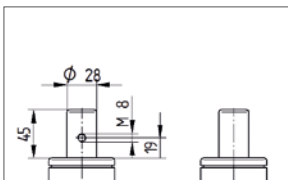


Description	 Fitting type	Solid stem	Solid stem with central total lock or central total and directional lock	Solid stem	Solid stem with central total lock or central total and directional lock	Solid stem with central total lock or central total and directional lock
	Article description	R05-28	R26-28	R05-32	R36-32	R36-34
	Shape	Round	Round	Round	Round	Round with octagonal profile
	Thread for fixation screw	M8	4 x M8	M6	4 x M6	-
	Thread position from bottom	19 mm	19 mm	7 mm	7 mm	-
	Solid stem \varnothing	28 mm	28 mm	32 mm	32 mm	32 mm
	Solid stem length	45 mm	96 mm	45 mm	50 mm	51 mm
	Shifting angles	-	30° or 45°	-	30° or 45°	30° or 45°
	Spring type for actuation torques	-	Soft, standard or hard	-	Soft, standard or hard	Soft, standard or hard
	Overall height 	Wheel \varnothing 100 mm	130 mm 139 mm	130 mm 139 mm	130 mm 139 mm	130 mm 139 mm
Wheel \varnothing 125 mm		158 mm	158 mm	158 mm	158 mm	-
Wheel \varnothing 150 mm		183 mm	183 mm	183 mm	183 mm	-
Wheel \varnothing 200 mm		229 mm	229 mm	229 mm	229 mm	229 mm

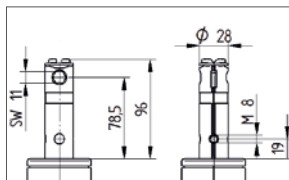
Items with this sign "-" are not available in our standard range. Please contact us.

Technical drawings

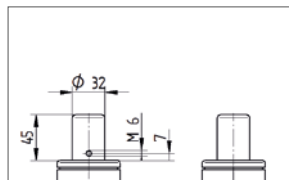
R05-28



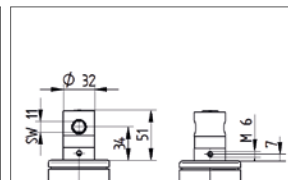
R26-28



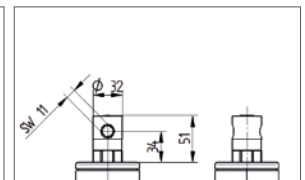
R05-32



R36-32



R36-34



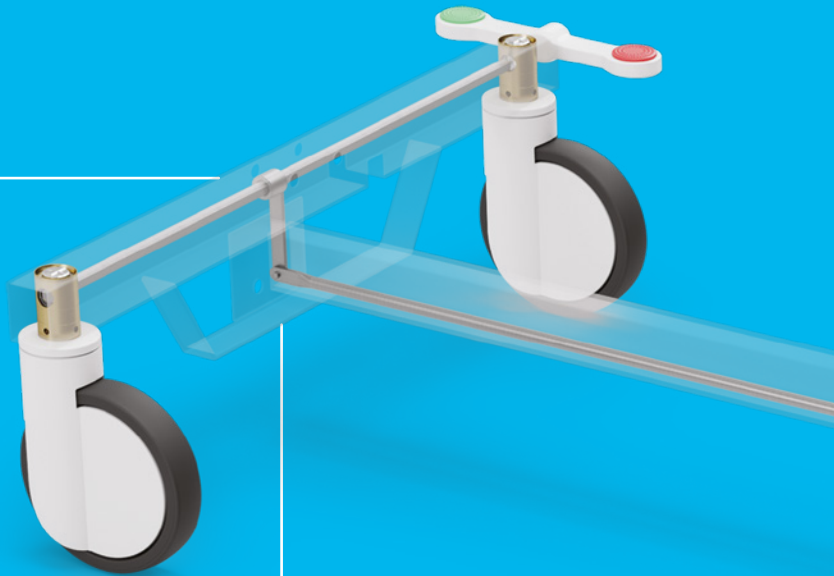
ACCESSORIES FOR CENTRAL LOCKING

Our central locking components offer a practical solution for your needs. Please contact us for further advice.



Change lever

To connect the transmission bar from the foot end to the head end. It is available in three different sizes.

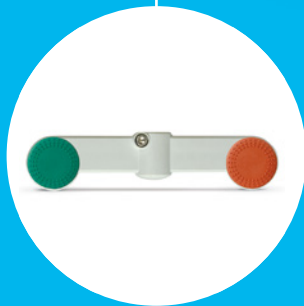
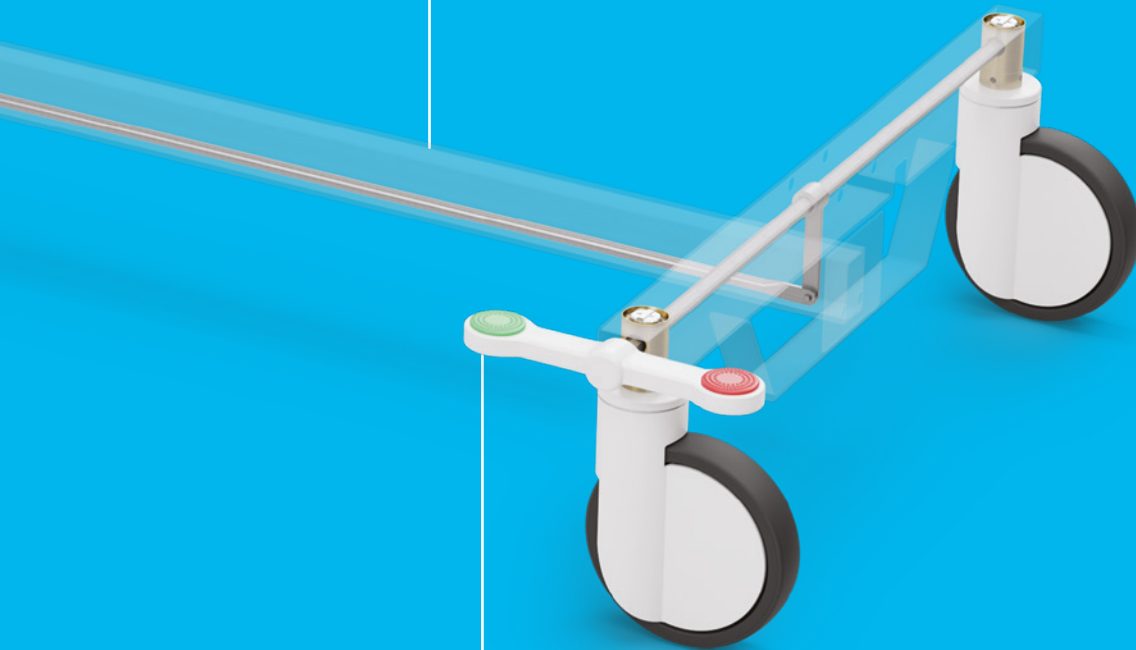


Bearing guide



Profile bar

Available in different lengths,
on request.



TENTE lever

All change levers will be delivered
with a stainless steel screw. They are
available as a single or double lever
for the right and left side. Plugs are
available in different colours.



Optional: adaptor for customer levers

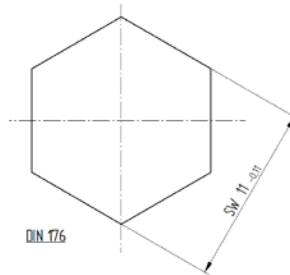
This round adaptor accepts customer
made levers.

TECHNICAL DATA ACCESSORIES

Profile bar



i	Article description	Profile bar
	Wrench size	11
	Material	Zinc-plated steel
	Length	On request



TENTE levers



Description	Change lever type	Double lever	Lever	Lever
	Article description	Double lever	Lever	Lever 180
	Compatible with product	30° or 45°	30° or 45°	30° or 45°
	Material	Fibre-glass-reinforced polyamide	Fibre-glass-reinforced polyamide	Fibre-glass-reinforced polyamide
	Version	Left version Right version	Left version	Right version
	Width	41,5 mm	41,5 mm	41,5 mm
	Length	191,5 mm	95,75 mm	95,75 mm

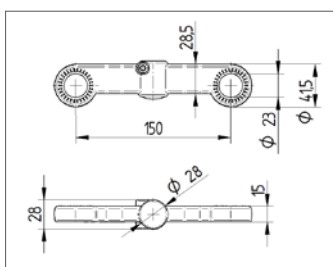
Standard lever colours
More colours on request.

- RAL 7035
- Eloxal silver

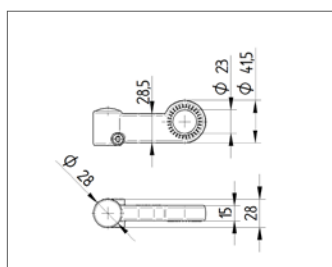
Standard plug colours
More colours on request.

- RAL 6016
- RAL 3016
- RAL 9011

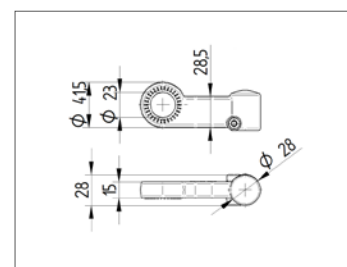
Double lever



Lever



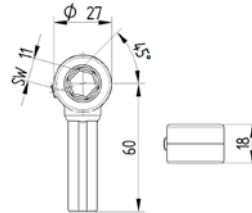
Lever 180



Adaptor for customer levers



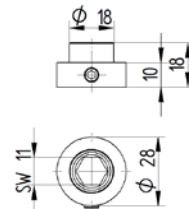
i	Article description	Adaptor
	Wrench size	11
	Material	Zinc die cast



Bearing guide



i	Article description	Bearing guide
	Wrench size	11
	Material	Zinc die cast

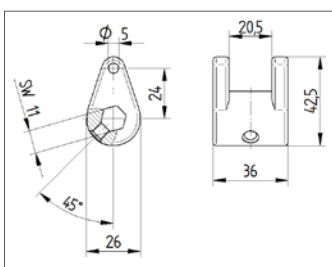


Change lever

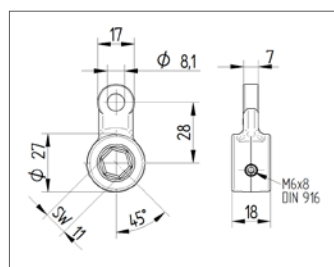


i	Article description	Change lever	Change lever	Change lever
	Wrench size	11	11	11
	Material	Zinc die cast	Zinc die cast	Zinc die cast
	Length	24 mm	28 mm	65 mm

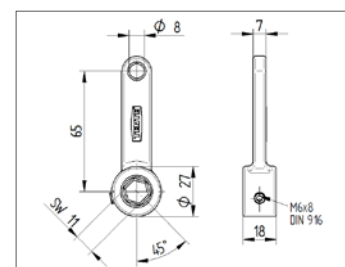
Change lever 24 mm length



Change lever 28 mm length



Change lever 65 mm length



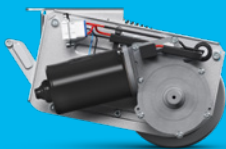
DIVERSITY WITH A SYSTEM

OUR CASTORS

All of our products have their own specific qualities and strengths. Whether it's high design standards, specialist applications or exceptional load capacities – our range can meet your needs and can be adapted to fit different models.

From the correct dimensions and technical specifications to the required configuration, our product families are able to offer the ideal solution – whatever you need. Contact us for more information or visit our website: www.tente.com

E-Drive



⌀ 125 mm

Alpha



⊃ 70 - 500 kg
⌀ 80 - 200 mm

Delta



⊃ 300 - 600 kg
⌀ 125 - 200 mm

Delta twin



⊃ 600 - 750 kg
⌀ 125 - 200 mm

Zeta



⊃ 300 - 800 kg
⌀ 125 - 250 mm

Kappa



⊃ 300 - 2.000 kg
⌀ 80 - 300 mm

Kappa flex



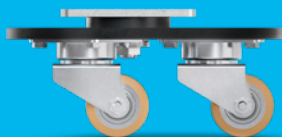
⊃ 360 - 750 kg
⌀ 160 - 200 mm

Omikron



⊃ 900 - 11.000 kg
⌀ 100 - 500 mm

Radiata



1.200 - 1.500 kg
80 mm

Scout



150 - 350 kg
160 - 200 mm

Integral



100 - 150 kg
100 - 200 mm

Integral twin



125 - 250 kg
100 - 150 mm

Linea clinic



150 - 200 kg
125 - 150 mm

Aviana care



100 kg
75 mm

Aviana



75 mm

Agila



40 - 100 kg
50 - 150 mm

Agila twin



50 - 100 kg
50 - 75 mm

Stora



60 - 160 kg
75 - 160 mm

Mono



30 - 70 kg
50 - 100 mm

Galea



60 - 100 kg
100 - 125 mm

Levina



60 - 100 kg
75 - 150 mm

Linea



40 - 150 kg
50 - 150 mm

Anika



40 - 50 kg
55 - 75 mm

Lumina



30 - 100 kg
35 - 75 mm

Stylea



40 - 100 kg
35 - 100 mm

Smiles



40 kg
50 mm

Compacta



10 - 55 kg
14 - 50 mm

EXPERTISE THAT INSPIRES

CONTACT US

We are a globally operating company supporting you on five continents. This means on-site support with service on a level playing field – along with in-depth knowledge. Additionally, our solution experts will advise you on the best mobility concept for your needs. Go here to find your nearest TENTE location: www.tente.com/locations

INCREASE YOUR EFFICIENCY

Our intelligent mobility solutions help you save time, effort, energy, and operating expenses. This allows you to improve your operating methods and working conditions, thereby optimising your processes and ensuring higher productivity, profitability and safety. Ask for our solutions catalogue or read about how our customers benefit from our tailor-made solutions on our website: www.tente.com/solutions

SAVE DEVELOPMENT TIME

On our website you will find technical drawings, product data sheets and 2D and 3D CAD files in various formats: www.tente.com/integral

GET MORE INFORMATION

In addition to our informative website, you can easily download various catalogues and brochures on mobility solutions, customer references, and much more: www.tente.com/download



ER LIFE.

ETP



www.tente.com



PRODUCTIVITY



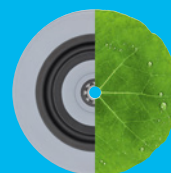
SAFETY



DESIGN



DURABILITY



ENVIRONMENT